

## Product datasheet for TP303972L

### TMPRSS4 (NM\_019894) Human Recombinant Protein

#### Product data:

Product Type:	Recombinant Proteins
Description:	Recombinant protein of human transmembrane protease, serine 4 (TMPRSS4), transcript variant 1, 1 mg
Species:	Human
Expression Host:	HEK293T
Expression cDNA Clone or AA Sequence:	>RC203972 protein sequence <b>Red</b> =Cloning site <b>Green</b> =Tags(s)
	<p>MLQDPDSDQPLNSLDVKPLRKPRIPMETFRKVGIPIIIIALLSLASIIIVVLIKVILDKYYFLCGQPLHF  IPRKQLCDGELDCPLGEDEEHCVKSFPEGPAVAVRLSKDRSTLQVLDSATGNWFSAFDNFTEALAEATAC  RQMGYSSKPTFRAVEIGPDQDLVDVEITENSQELMRNSSGPCLSGSLVSLHCLACGKSLKTPRVVGEE  ASVDSWPWQVSIQYDKQHVCGGSSILDPHWVLTAAHCFRKHTDVFNWKVRAGSDKLGSPSLAVAKIIIE  FNPMYPKDNDIALMKLQFPLTFSGTVRPICLPFFDEELTPATPLWIIGWGFTKQNGGKMSDILLQASVQV  IDSTRCNADDAYQGEVTEKMMMCAGIPEGVDTCQGDSSGGLMYQSDQWHVVGIVSWGYGCGGPSTPGVYT  KVSAYLNWIYNVWKAEL</p> <p><b>TRTRPLEQKLISEEDLAANDILDYKDDDDKV</b></p>
Tag:	C-Myc/DDK
Predicted MW:	48 kDa
Concentration:	>0.05 µg/µL as determined by microplate BCA method
Purity:	> 80% as determined by SDS-PAGE and Coomassie blue staining
Buffer:	25 mM Tris-HCl, 100 mM glycine, pH 7.3, 10% glycerol
Bioactivity:	Cell treatment (PMID: <a href="https://pubmed.ncbi.nlm.nih.gov/29529050/">29529050</a> )
Preparation:	Recombinant protein was captured through anti-DDK affinity column followed by conventional chromatography steps.
Note:	For testing in cell culture applications, please filter before use. Note that you may experience some loss of protein during the filtration process.
Storage:	Store at -80°C.



[View online »](#)

**Stability:** Stable for 12 months from the date of receipt of the product under proper storage and handling conditions. Avoid repeated freeze-thaw cycles.

**RefSeq:** [NP\\_063947](#)

**Locus ID:** 56649

**UniProt ID:** [Q9NRS4](#)

**RefSeq Size:** 3549

**Cytogenetics:** 11q23.3

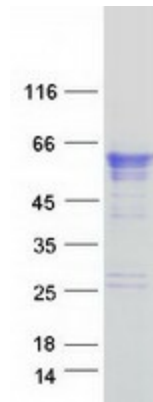
**RefSeq ORF:** 1311

**Synonyms:** CAP2; CAPH2; MT-SP2; TMPRSS3

**Summary:** This gene encodes a member of the serine protease family. Serine proteases are known to be involved in a variety of biological processes, whose malfunction often leads to human diseases and disorders. This gene was identified as a gene overexpressed in pancreatic carcinoma. The encoded protein is membrane bound with a N-terminal anchor sequence and a glycosylated extracellular region containing the serine protease domain. Multiple transcript variants encoding different isoforms have been found for this gene. [provided by RefSeq, Jul 2008]

**Protein Families:** Druggable Genome, Protease, Transmembrane

### Product images:



Coomassie blue staining of purified TMPRSS4 protein (Cat# [TP303972]). The protein was produced from HEK293T cells transfected with TMPRSS4 cDNA clone (Cat# [RC203972]) using MegaTran 2.0 (Cat# [TT210002]).