

Product datasheet for TP303972

TMPRSS4 (NM_019894) Human Recombinant Protein

Product data:

Product Type: Recombinant Proteins
Description: Recombinant protein of human transmembrane protease, serine 4 (TMPRSS4), transcript variant 1, 20 µg

Species: Human

Expression Host: HEK293T

Expression cDNA Clone or AA Sequence: >RC203972 protein sequence
Red=Cloning site **Green**=Tags(s)

MLQDPDSDQPLNSLDVKPLRKPRIPMETFRKVGIPIIIALLSLASIIIVVLIKVILDKYYFLCGQPLHF
 IPRKQLCDGELDCPLGEDEEHCVKSFPEGPAVAVRLSKDRSTLQVLSATGNWFSACFDNFTEALAEAC
 RQMGYSSKPTFRAVEIGPDQDLVDVEITENSQELMRNSSGPCLSGSLVSLHCLACGKSLKTPRVVGGEE
 ASVDSWPWQVSIQYDKQHVCGGSSILDPHWVLTAAHCFRKHTDVFNWKVRAGSDKLGSPSLAVAKIIIE
 FNPMYPKDNNDIALMKLQFPLTFSGTVRPICLPFFDEELTPATPLWIIGWGFTKQNGGKMSDILLQASVQV
 IDSTRCNADDAYQGEVTEKMMCAGIPEGGVDTQCQGDSGGPLMYQSDQWHVVGIVSWGYGCGGPSTPG
 VYT
 KVSAYLNWIYNVWKAEL

TRTRPLEQKLISEEDLAANDILDYKDDDDKV

Tag: C-Myc/DDK

Predicted MW: 48 kDa

Concentration: >0.05 µg/µL as determined by microplate BCA method

Purity: > 80% as determined by SDS-PAGE and Coomassie blue staining

Buffer: 25 mM Tris-HCl, 100 mM glycine, pH 7.3, 10% glycerol

Bioactivity: Cell treatment (PMID: [29529050](https://pubmed.ncbi.nlm.nih.gov/29529050/))

Preparation: Recombinant protein was captured through anti-DDK affinity column followed by conventional chromatography steps.

Note: For testing in cell culture applications, please filter before use. Note that you may experience some loss of protein during the filtration process.

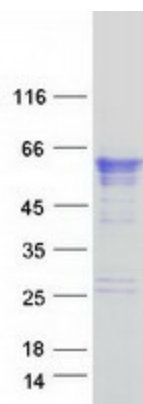
Storage: Store at -80°C.



[View online »](#)

Stability:	Stable for 12 months from the date of receipt of the product under proper storage and handling conditions. Avoid repeated freeze-thaw cycles.
RefSeq:	NP_063947
Locus ID:	56649
UniProt ID:	Q9NRS4
RefSeq Size:	3549
Cytogenetics:	11q23.3
RefSeq ORF:	1311
Synonyms:	CAP2; CAPH2; MT-SP2; TMPRSS3
Summary:	This gene encodes a member of the serine protease family. Serine proteases are known to be involved in a variety of biological processes, whose malfunction often leads to human diseases and disorders. This gene was identified as a gene overexpressed in pancreatic carcinoma. The encoded protein is membrane bound with a N-terminal anchor sequence and a glycosylated extracellular region containing the serine protease domain. Multiple transcript variants encoding different isoforms have been found for this gene. [provided by RefSeq, Jul 2008]
Protein Families:	Druggable Genome, Protease, Transmembrane

Product images:



Coomassie blue staining of purified TMPRSS4 protein (Cat# TP303972). The protein was produced from HEK293T cells transfected with TMPRSS4 cDNA clone (Cat# [RC203972]) using MegaTran 2.0 (Cat# [TT210002]).