

## Product datasheet for **TP303970M**

### STEAP1 (NM\_012449) Human Recombinant Protein

#### Product data:

**Product Type:** Recombinant Proteins

**Description:** Recombinant protein of human six transmembrane epithelial antigen of the prostate 1 (STEAP1), 100 µg

**Species:** Human

**Expression Host:** HEK293T

**Expression cDNA Clone or AA Sequence:** >RC203970 protein sequence  
**Red**=Cloning site **Green**=Tags(s)

MESRKDITNQEELWKMKPRRNLEEDDYLHKDTGETSMLKRPVLLHLHQTAHADEFDCPSELQHTQELFPQ  
WHLPIKIAAIIASLTFLYLLREVIHPLATSHQQYFYKIPILVINKVLPMSITLLALVYLPGVIAAIVQ  
LHNGTKYKKFPHWLDKWMMLTRKQFGLLSFFFAVLHAIYLSYPMRRSYRYKLLNWAYQQVQKQKEDAWIE  
HDVWRMEIYVSLGIVGLAILALLAVTIPSVSDSLWREFHYIQSKLGIVSLLLGTIHALIFAWNKWIDI  
KQFVWYTPPTFMIAVFLPIVVLIFKLSILFLPCLRKKILKIRHWEDVTKINKTEICSQL

**TRTRPLEQKLISEEDLAANDILDYKDDDDKV**

**Tag:** C-Myc/DDK

**Predicted MW:** 39.7 kDa

**Concentration:** >0.05 µg/µL as determined by microplate BCA method

**Purity:** > 80% as determined by SDS-PAGE and Coomassie blue staining

**Buffer:** 25 mM Tris-HCl, 100 mM glycine, pH 7.3, 10% glycerol

**Preparation:** Recombinant protein was captured through anti-DDK affinity column followed by conventional chromatography steps.

**Note:** For testing in cell culture applications, please filter before use. Note that you may experience some loss of protein during the filtration process.

**Storage:** Store at -80°C.

**Stability:** Stable for 12 months from the date of receipt of the product under proper storage and handling conditions. Avoid repeated freeze-thaw cycles.

**RefSeq:** [NP\\_036581](#)

**Locus ID:** 26872



[View online »](#)

UniProt ID: [Q9UHE8](#)

RefSeq Size: 1330

Cytogenetics: 7q21.13

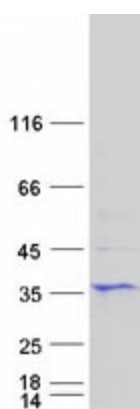
RefSeq ORF: 1017

Synonyms: PRSS24; STEAP

**Summary:** This gene is predominantly expressed in prostate tissue, and is found to be upregulated in multiple cancer cell lines. The gene product is predicted to be a six-transmembrane protein, and was shown to be a cell surface antigen significantly expressed at cell-cell junctions. [provided by RefSeq, Jul 2008]

**Protein Families:** Transmembrane

### Product images:



Coomassie blue staining of purified STEAP1 protein (Cat# [TP303970]). The protein was produced from HEK293T cells transfected with STEAP1 cDNA clone (Cat# [RC203970]) using MegaTran 2.0 (Cat# [TT210002]).