

Product datasheet for **TP303970L**

STEAP1 (NM_012449) Human Recombinant Protein

Product data:

Product Type: Recombinant Proteins

Description: Recombinant protein of human six transmembrane epithelial antigen of the prostate 1 (STEAP1), 1 mg

Species: Human

Expression Host: HEK293T

Expression cDNA Clone or AA Sequence: >RC203970 protein sequence
Red=Cloning site **Green**=Tags(s)

MESRKDITNQEELWKMKPRRNLEEDDYLHKDTGETSMLKRPVLLHLHQTAHADEFDCPSELQHTQELFPQ
WHLPIKIAAIIASLTFLYLLREVIHPLATSHQQYFYKIPILVINKVLPVMSITLLALVYLPGVIAAIVQ
LHNGTKYKKFPHWLDKWMLTRKQFGLLSFFFAVLHAIYLSYPMRRSYRYKLLNWAYQQVQQNKEDAWIE
HDVWRMEIYVSLGIVGLAILALLAVTIPSVDLSLWREFHYIQSKLGIVSLLLGTIHALIFAWNKWIDI
KQFVWYTPPTFMIAVFLPIVVLIFKSILFLPCLRKKILKIRHWEDVTKINKTEICSQL

TRTRPLEQKLISEEDLAANDILDYKDDDDKV

Tag: C-Myc/DDK

Predicted MW: 39.7 kDa

Concentration: >0.05 µg/µL as determined by microplate BCA method

Purity: > 80% as determined by SDS-PAGE and Coomassie blue staining

Buffer: 25 mM Tris-HCl, 100 mM glycine, pH 7.3, 10% glycerol

Preparation: Recombinant protein was captured through anti-DDK affinity column followed by conventional chromatography steps.

Note: For testing in cell culture applications, please filter before use. Note that you may experience some loss of protein during the filtration process.

Storage: Store at -80°C.

Stability: Stable for 12 months from the date of receipt of the product under proper storage and handling conditions. Avoid repeated freeze-thaw cycles.

RefSeq: [NP_036581](#)

Locus ID: 26872



[View online »](#)

UniProt ID: [Q9UHE8](#)

RefSeq Size: 1330

Cytogenetics: 7q21.13

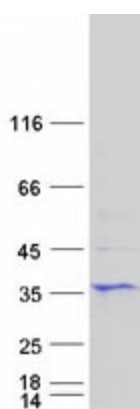
RefSeq ORF: 1017

Synonyms: PRSS24; STEAP

Summary: This gene is predominantly expressed in prostate tissue, and is found to be upregulated in multiple cancer cell lines. The gene product is predicted to be a six-transmembrane protein, and was shown to be a cell surface antigen significantly expressed at cell-cell junctions. [provided by RefSeq, Jul 2008]

Protein Families: Transmembrane

Product images:



Coomassie blue staining of purified STEAP1 protein (Cat# [TP303970]). The protein was produced from HEK293T cells transfected with STEAP1 cDNA clone (Cat# [RC203970]) using MegaTran 2.0 (Cat# [TT210002]).