

Product datasheet for **TP303968M**

BEN Domain Containing Protein 5 (BEND5) (NM_024603) Human Recombinant Protein

Product data:

Product Type: Recombinant Proteins

Description: Recombinant protein of human BEN domain containing 5 (BEND5), 100 µg

Species: Human

Expression Host: HEK293T

Expression cDNA Clone or AA Sequence: >RC203968 representing NM_024603
Red=Cloning site **Green**=Tags(s)

MYAFVRFLEDNVCYALPVSCVRDFSPRSRLDFDNQKVYAVYRGPEELGAGPESPPRAPRDWGALLLHKAQ
ILALAEDKSDLENSVMQKKIKIPKLSLNHVEEDGEVKDYGEEDLQLRHIKRPEGRKPSEVAHKSIEAWVA
RLEKQNGLSLGHSTCPPEEVFVEASPGTEDMDSLEDAVVPRALYEELLRNYQQQQEEMRHLQQELERTRRQ
LVQQAQKLLKEYGALVSEMKELRDLNRRQLQDVLLRLGSGPAIDLEKVKSECLEPEPELRSTFSEEANTSS
YYPAPAPVMDKYILDNGKVHLGSGIWWDEEKWHQLQVTQGDSKYTKNLAVMIWGTDLVKNRSVTGVATKK
KKDAVPKPPLSPHKLSIVRECLYDRIAQETVDETEIAQRLSKVNKYICEKIMDINKSCKNEERREAKYNL
Q

TRTRPLEQKLISEEDLAANDILDYKDDDDKV

Tag: C-Myc/DDK

Predicted MW: 29.1 kDa

Concentration: >0.05 µg/µL as determined by microplate BCA method

Purity: > 80% as determined by SDS-PAGE and Coomassie blue staining

Buffer: 25 mM Tris-HCl, 100 mM glycine, pH 7.3, 10% glycerol

Preparation: Recombinant protein was captured through anti-DDK affinity column followed by conventional chromatography steps.

Note: For testing in cell culture applications, please filter before use. Note that you may experience some loss of protein during the filtration process.

Storage: Store at -80°C.

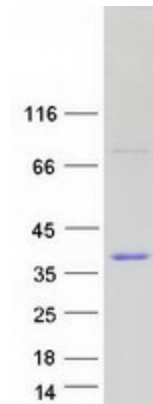
Stability: Stable for 12 months from the date of receipt of the product under proper storage and handling conditions. Avoid repeated freeze-thaw cycles.

RefSeq: [NP_078879](#)



[View online »](#)

Locus ID:	79656
UniProt ID:	Q7L4P6 , A0A0S2Z5N0
RefSeq Size:	1781
Cytogenetics:	1p33
RefSeq ORF:	1263
Synonyms:	C1orf165
Summary:	Acts as a transcriptional repressor (PubMed:23468431).[UniProtKB/Swiss-Prot Function]

Product images:

Coomassie blue staining of purified BEND5 protein (Cat# [TP303968]). The protein was produced from HEK293T cells transfected with BEND5 cDNA clone (Cat# [RC203968]) using MegaTran 2.0 (Cat# [TT210002]).