

Product datasheet for **TP303964M**

PLEKHF2 (NM_024613) Human Recombinant Protein

Product data:

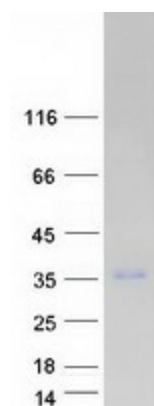
Product Type:	Recombinant Proteins
Description:	Recombinant protein of human pleckstrin homology domain containing, family F (with FYVE domain) member 2 (PLEKHF2), 100 µg
Species:	Human
Expression Host:	HEK293T
Expression cDNA Clone or AA Sequence:	>RC203964 protein sequence Red =Cloning site Green =Tags(s)
	<p>MVDRLANSEANTRRISIVENCFAAGQPLTIPGRVLIGEGVLTKLCRKKPKARQFFLFNDILVYGNIVIQ KKKYNKQHIIPLENVTIDSIKDEGDLRNGWLIKTPKSFVYAATATEKSEWMNHINKCVTDLLSKSGKT PSNEHAHVWPDSEATVCMRCQKAKFTPVNRRHHCRKCGFVVCGPCSEKRFLPSQSSKPVRIKDFCYDL LSAGDMATCQPARSDSYSQSLKPLNDMSDDDDDDDDSSD</p> <p>TRTRPLEQKLISEEDLAANDILDYKDDDDKV</p>
Tag:	C-Myc/DDK
Predicted MW:	27.6 kDa
Concentration:	>0.05 µg/µL as determined by microplate BCA method
Purity:	> 80% as determined by SDS-PAGE and Coomassie blue staining
Buffer:	25 mM Tris-HCl, 100 mM glycine, pH 7.3, 10% glycerol
Preparation:	Recombinant protein was captured through anti-DDK affinity column followed by conventional chromatography steps.
Note:	For testing in cell culture applications, please filter before use. Note that you may experience some loss of protein during the filtration process.
Storage:	Store at -80°C.
Stability:	Stable for 12 months from the date of receipt of the product under proper storage and handling conditions. Avoid repeated freeze-thaw cycles.
RefSeq:	<u>NP_078889</u>
Locus ID:	79666



[View online »](#)

UniProt ID:	<u>Q9H8W4</u>
RefSeq Size:	2977
Cytogenetics:	8q22.1
RefSeq ORF:	747
Synonyms:	EAPF; PHAFIN2; ZFYVE18
Summary:	May play a role in early endosome fusion upstream of RAB5, hence regulating receptor trafficking and fluid-phase transport. Enhances cellular sensitivity to TNF-induced apoptosis (PubMed:18288467).[UniProtKB/Swiss-Prot Function]

Product images:



Coomassie blue staining of purified PLEKHF2 protein (Cat# [TP303964]). The protein was produced from HEK293T cells transfected with PLEKHF2 cDNA clone (Cat# [RC203964]) using MegaTran 2.0 (Cat# [TT210002]).