

Product datasheet for TP303954L

gamma Adaptin (AP1G1) (NM_001030007) Human Recombinant Protein

Product data:

| | |
|---------------------------------------|---|
| Product Type: | Recombinant Proteins |
| Description: | Recombinant protein of human adaptor-related protein complex 1, gamma 1 subunit (AP1G1), transcript variant 1, 1 mg |
| Species: | Human |
| Expression Host: | HEK293T |
| Expression cDNA Clone or AA Sequence: | >RC203954 representing NM_001030007 Red=Cloning site Green=Tags(s) |

MPAPIRLRELIRTIRTARTQAEEREMIQKECAAIRSSFREEDNTYRCRNVAKLLYMHMLGYPAHFGQLEC
FKLIASQKFTDKRIGYLGAMLLLDERQDVHLLMTNCIKNDLNHSTQFVQGLALCTLGCMGSSEMCRDLA
EVEKLLKTSNSYLKKAALCAVHVIRKVPPELMEFLPATKNLLNEKNHGVLHTSVLLTEMCERSPDMLA
HFRKNEKLVLPQLVRILKNLIMSGYSPEHDVSGISDPFLQVRILRLLRILGRNDDDSSEAMNDILAQVATN
TETSKNVGNAILYETVLTIMDIKSEGLRVLAINILGRFLLNNDKNIRYVALTSLLKTVQTDHNAVQRHR
STIVDCLKDLDVSIKRRAMELSFALVNGNINIRGMMKELLYFLDSCEPEFKADCASGIFLAAEKYAPSKRW
HIDTIMRVLTTAGSYVRDDAVPNLIQLITNSVEMHAYTVQRLYKAILGDYSQQPLVQVAAWCIGEYGDLL
VSGQCEEEPIQVTEDEVLDILESVLISNMSTSVTRGYALTAIMKLSTRFTCTVNRIKKVVSIIYSSIDV
ELQQRAVEYNALFKKYDHMRSALLERMPVMEKVTNNGPTEIVQTNGETEPAPLETKPPPSGPQPTSQAND
LLDLLGGNDITPVIPTAPTSKPSSAGGELLDLLGDINLTGAPAAAPAPASVPQISQPPFLLDGLSSQPLF
NDIAAGIPSITAYSKNGLKIEFTFERSNTNPSVTVITIQASNSTELDMTDFVFQAAVPKTFQLQLLSPSS
SIVPAFNTGTITQVIKVLNPQKQQLRMRIKLTYNHKGSAEQDLAEVNNFPPQSWQ

TRTRPLEQKLISEEDLAANDILDYKDDDDKV

| | |
|----------------|--|
| Tag: | C-Myc/DDK |
| Predicted MW: | 91.5 kDa |
| Concentration: | >0.05 µg/µL as determined by microplate BCA method |
| Purity: | > 80% as determined by SDS-PAGE and Coomassie blue staining |
| Buffer: | 25 mM Tris-HCl, 100 mM glycine, pH 7.3, 10% glycerol |
| Preparation: | Recombinant protein was captured through anti-DDK affinity column followed by conventional chromatography steps. |



[View online »](#)

Note: For testing in cell culture applications, please filter before use. Note that you may experience some loss of protein during the filtration process.

Storage: Store at -80°C.

Stability: Stable for 12 months from the date of receipt of the product under proper storage and handling conditions. Avoid repeated freeze-thaw cycles.

RefSeq: [NP_001025178](#)

Locus ID: 164

UniProt ID: [Q43747](#), [A0A140VJE7](#), [Q8IY97](#)

RefSeq Size: 6850

Cytogenetics: 16q22.2

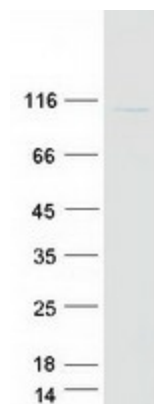
RefSeq ORF: 2475

Synonyms: ADTG; CLAPG1

Summary: Adaptins are important components of clathrin-coated vesicles transporting ligand-receptor complexes from the plasma membrane or from the trans-Golgi network to lysosomes. The adaptin family of proteins is composed of four classes of molecules named alpha, beta-, beta prime- and gamma- adaptins. Adaptins, together with medium and small subunits, form a heterotetrameric complex called an adaptor, whose role is to promote the formation of clathrin-coated pits and vesicles. The protein encoded by this gene is a gamma-adaptin protein and it belongs to the adaptor complexes large subunits family. Two transcript variants encoding different isoforms have been found for this gene. [provided by RefSeq, Jul 2008]

Protein Pathways: Lysosome

Product images:



Coomassie blue staining of purified AP1G1 protein (Cat# [TP303954]). The protein was produced from HEK293T cells transfected with AP1G1 cDNA clone (Cat# [RC203954]) using MegaTran 2.0 (Cat# [TT210002]).