

## Product datasheet for TP303951

### S100 alpha 6 (S100A6) (NM\_014624) Human Recombinant Protein

#### Product data:

Product Type:	Recombinant Proteins
Description:	Recombinant protein of human S100 calcium binding protein A6 (S100A6), 20 µg
Species:	Human
Expression Host:	HEK293T
Expression cDNA Clone or AA Sequence:	>RC203951 protein sequence <b>Red</b> =Cloning site <b>Green</b> =Tags(s)
	MACPLDQAIGLLVAIFHKYSGREGDKHTLSKKELKELIQKELTIGSKLQDAEIARLMEDLDRNKDQEVNF QEYVTFGLGALALIYNEALKG
	<b>TR</b> TRPLEQKLISEEDLAANDILDYKDDDDKV
Tag:	C-Myc/DDK
Predicted MW:	10 kDa
Concentration:	>0.05 µg/µL as determined by microplate BCA method
Purity:	> 80% as determined by SDS-PAGE and Coomassie blue staining
Buffer:	25 mM Tris-HCl, 100 mM glycine, pH 7.3, 10% glycerol
Preparation:	Recombinant protein was captured through anti-DDK affinity column followed by conventional chromatography steps.
Note:	For testing in cell culture applications, please filter before use. Note that you may experience some loss of protein during the filtration process.
Storage:	Store at -80°C.
Stability:	Stable for 12 months from the date of receipt of the product under proper storage and handling conditions. Avoid repeated freeze-thaw cycles.
RefSeq:	<a href="#">NP_055439</a>
Locus ID:	6277
UniProt ID:	<a href="#">P06703</a>
RefSeq Size:	683
Cytogenetics:	1q21.3



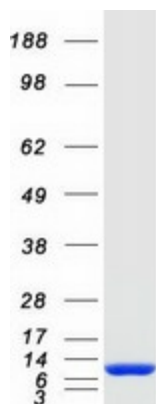
[View online »](#)

RefSeq ORF: 270

Synonyms: 2A9; 5B10; CABP; CACY; PRA; S10A6

**Summary:** The protein encoded by this gene is a member of the S100 family of proteins containing 2 EF-hand calcium-binding motifs. S100 proteins are localized in the cytoplasm and/or nucleus of a wide range of cells, and involved in the regulation of a number of cellular processes such as cell cycle progression and differentiation. S100 genes include at least 13 members which are located as a cluster on chromosome 1q21. This protein may function in stimulation of Ca<sup>2+</sup>-dependent insulin release, stimulation of prolactin secretion, and exocytosis. Chromosomal rearrangements and altered expression of this gene have been implicated in melanoma. [provided by RefSeq, Jul 2008]

### Product images:



Coomassie blue staining of purified S100A6 protein (Cat# TP303951). The protein was produced from HEK293T cells transfected with S100A6 cDNA clone (Cat# [RC203951]) using MegaTran 2.0 (Cat# [TT210002]).