

Product datasheet for **TP303945L**

beta IV Tubulin (TUBB4A) (NM_006087) Human Recombinant Protein

Product data:

Product Type:	Recombinant Proteins
Description:	Recombinant protein of human tubulin, beta 4 (TUBB4), 1 mg
Species:	Human
Expression Host:	HEK293T
Expression cDNA Clone or AA Sequence:	>RC203945 protein sequence Red =Cloning site Green =Tags(s)
	<p>MREIVHLQAGQCGNQIGAKFWEVISDEHGIDPTGTYHGDSDLQLERINVYYNEATGGNYVPRAVLVDLEP GTMDSVRSRSGPFGQIFRPDNFVFGQSGAGNNWAKGHYTEGAELVDAVLVDVVRKEAESCDLQGFQLTHSLG GGTGSGMGTLISKIREFPDRIMNTFSVSPKVSdTVEPYNATLSVHQLVENTDETYCIDNEALYDI CFRTLKLTPTYGDLNHLVSATMSGVTTCLRFPQNLADLRKLAVNMVFPRLHFFMPGFAPLTSRGSQQ YRALVPELTQQMFDAKNMMAACDPRHGRYLTVAAVFRGRMSMKEVDEQMLSVQSKNSSYFVEWIPNNVK TAVCDIPPRGLKMAATFIGNSTAIQELFKRISEQFTAMFRRKAFLHWYTGEGMDEMEFTEAESNMNDLVS EYQQYQDATAEEGEFEFEFEFEVA</p> <p>TRTRPLEQKLISEEDLAANDILDYKDDDDKV</p>
Tag:	C-Myc/DDK
Predicted MW:	49.4 kDa
Concentration:	>0.05 µg/µL as determined by microplate BCA method
Purity:	> 80% as determined by SDS-PAGE and Coomassie blue staining
Buffer:	25 mM Tris-HCl, 100 mM glycine, pH 7.3, 10% glycerol
Preparation:	Recombinant protein was captured through anti-DDK affinity column followed by conventional chromatography steps.
Note:	For testing in cell culture applications, please filter before use. Note that you may experience some loss of protein during the filtration process.
Storage:	Store at -80°C.
Stability:	Stable for 12 months from the date of receipt of the product under proper storage and handling conditions. Avoid repeated freeze-thaw cycles.
RefSeq:	<u>NP_006078</u>



[View online »](#)

Locus ID: 10382

UniProt ID: [P04350](#)

RefSeq Size: 2583

Cytogenetics: 19p13.3

RefSeq ORF: 1332

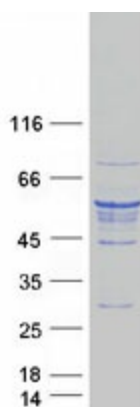
Synonyms: beta-5; DYT4; TUBB4

Summary: This gene encodes a member of the beta tubulin family. Beta tubulins are one of two core protein families (alpha and beta tubulins) that heterodimerize and assemble to form microtubules. Mutations in this gene cause hypomyelinating leukodystrophy-6 and autosomal dominant torsion dystonia-4. Alternate splicing results in multiple transcript variants encoding different isoforms. A pseudogene of this gene is found on chromosome X. [provided by RefSeq, Jan 2014]

Protein Families: Druggable Genome

Protein Pathways: Gap junction, Pathogenic Escherichia coli infection

Product images:



Coomassie blue staining of purified TUBB4A protein (Cat# [TP303945]). The protein was produced from HEK293T cells transfected with TUBB4A cDNA clone (Cat# [RC203945]) using MegaTran 2.0 (Cat# [TT210002]).