

Product datasheet for TP303942M

NCE2 (UBE2F) (NM_080678) Human Recombinant Protein

Product data:

Product Type:	Recombinant Proteins
Description:	Recombinant protein of human ubiquitin-conjugating enzyme E2F (putative) (UBE2F), 100 µg
Species:	Human
Expression Host:	HEK293T
Expression cDNA Clone or AA Sequence:	>RC203942 representing NM_080678 Red =Cloning site Green =Tags(s)

MLTLASKLKRDDGLKGSRTAATASDSTRRSVRDKLLVKEVALEANLPCTCKVHFPDPNKLHCFQLTVT
 PDEGYQGGKFQFETEVDPAYNMVPPKVCLTKIWHPNITETGEICLSLLREHSIDGTGWAPTRTLKDV
 WGLNSLFTDLLNFDDPLNIEAAEHHLRDKEDFRNKVDDYIKRYAR

TRTRPLEQKLISEEDLAANDILDYKDDDDKV

Tag:	C-Myc/DDK
Predicted MW:	20.9 kDa
Concentration:	>0.05 µg/µL as determined by microplate BCA method
Purity:	> 80% as determined by SDS-PAGE and Coomassie blue staining
Buffer:	25 mM Tris-HCl, 100 mM glycine, pH 7.3, 10% glycerol
Preparation:	Recombinant protein was captured through anti-DDK affinity column followed by conventional chromatography steps.
Note:	For testing in cell culture applications, please filter before use. Note that you may experience some loss of protein during the filtration process.
Storage:	Store at -80°C.
Stability:	Stable for 12 months from the date of receipt of the product under proper storage and handling conditions. Avoid repeated freeze-thaw cycles.
RefSeq:	<u>NP_542409</u>
Locus ID:	140739
UniProt ID:	<u>Q969M7</u>
RefSeq Size:	1366


[View online »](#)

Cytogenetics: 2q37.3

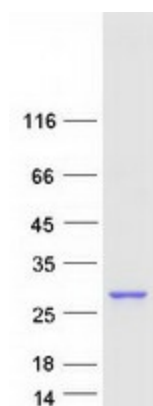
RefSeq ORF: 555

Synonyms: NCE2

Summary: Accepts the ubiquitin-like protein NEDD8 from the UBA3-NAE1 E1 complex and catalyzes its covalent attachment to other proteins. The specific interaction with the E3 ubiquitin ligase RBX2, but not RBX1, suggests that the RBX2-UBE2F complex neddylates specific target proteins, such as CUL5.[UniProtKB/Swiss-Prot Function]

Protein Pathways: Ubiquitin mediated proteolysis

Product images:



Coomassie blue staining of purified UBE2F protein (Cat# [TP303942]). The protein was produced from HEK293T cells transfected with UBE2F cDNA clone (Cat# [RC203942]) using MegaTran 2.0 (Cat# [TT210002]).