

## Product datasheet for **TP303942**

### **NCE2 (UBE2F) (NM\_080678) Human Recombinant Protein**

#### Product data:

Product Type:	Recombinant Proteins
Description:	Recombinant protein of human ubiquitin-conjugating enzyme E2F (putative) (UBE2F), 20 µg
Species:	Human
Expression Host:	HEK293T
Expression cDNA Clone or AA Sequence:	>RC203942 representing NM_080678 <b>Red</b> =Cloning site <b>Green</b> =Tags(s)
	 MLTLASKLKRDDGLKGSRTAATASDSTRRVSVRDKLLVKEVAELEANLPCTCKVHFPDPNKLHCFQLTVT PDEGYQGGKFQFETEVDPDAYNMVPPKVCLTKIWHPNITETGEICLSLLREHSIDGTGWAPTRTLKDW WGLNSLFTDLLNFDDPLNIEAAEHHLRDKEDFRNKVDDYIKRYAR  <b>TRTRPLEQKLISEEDLAANDILDYKDDDDKV</b>
Tag:	C-Myc/DDK
Predicted MW:	20.9 kDa
Concentration:	>0.05 µg/µL as determined by microplate BCA method
Purity:	> 80% as determined by SDS-PAGE and Coomassie blue staining
Buffer:	25 mM Tris-HCl, 100 mM glycine, pH 7.3, 10% glycerol
Preparation:	Recombinant protein was captured through anti-DDK affinity column followed by conventional chromatography steps.
Note:	For testing in cell culture applications, please filter before use. Note that you may experience some loss of protein during the filtration process.
Storage:	Store at -80°C.
Stability:	Stable for 12 months from the date of receipt of the product under proper storage and handling conditions. Avoid repeated freeze-thaw cycles.
RefSeq:	<a href="#">NP_542409</a>
Locus ID:	140739
UniProt ID:	<a href="#">Q969M7</a>
RefSeq Size:	1366



[View online »](#)

Cytogenetics: 2q37.3

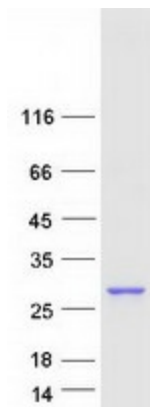
RefSeq ORF: 555

Synonyms: NCE2

**Summary:** Accepts the ubiquitin-like protein NEDD8 from the UBA3-NAE1 E1 complex and catalyzes its covalent attachment to other proteins. The specific interaction with the E3 ubiquitin ligase RBX2, but not RBX1, suggests that the RBX2-UBE2F complex neddylates specific target proteins, such as CUL5.[UniProtKB/Swiss-Prot Function]

**Protein Pathways:** Ubiquitin mediated proteolysis

### Product images:



Coomassie blue staining of purified UBE2F protein (Cat# TP303942). The protein was produced from HEK293T cells transfected with UBE2F cDNA clone (Cat# [RC203942]) using MegaTran 2.0 (Cat# [TT210002]).