

Product datasheet for **TP303940M**

GSG1L (NM_144675) Human Recombinant Protein

Product data:

Product Type:	Recombinant Proteins
Description:	Recombinant protein of human GSG1-like (GSG1L), transcript variant 2, 100 µg
Species:	Human
Expression Host:	HEK293T
Expression cDNA	>RC203940 protein sequence
Clone or AA Sequence:	Red=Cloning site Green=Tags(s)

MCLELFHSSNVIDGLKLNFAAVFTVLSGLLGMVAHMMYTQVFQVTVSLGPEDWRPHSWDYGWSFCLAWG
SFTCCMAASVTTLNSYTKTVIEFRHKRKFQGYREEPTFIDPEAIKYFRERMEKRDGSEEDFHLDRCHE
RYPARHQPHMADSWPRSSAQEAPELNRQCWVLGHWW

TRTRPLEQKLISEEDLAANDILDYKDDDDKV

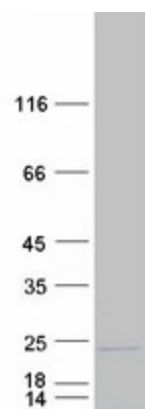
Tag:	C-Myc/DDK
Predicted MW:	20.4 kDa
Concentration:	>0.05 µg/µL as determined by microplate BCA method
Purity:	> 80% as determined by SDS-PAGE and Coomassie blue staining
Buffer:	25 mM Tris-HCl, 100 mM glycine, pH 7.3, 10% glycerol
Preparation:	Recombinant protein was captured through anti-DDK affinity column followed by conventional chromatography steps.
Note:	For testing in cell culture applications, please filter before use. Note that you may experience some loss of protein during the filtration process.
Storage:	Store at -80°C.
Stability:	Stable for 12 months from the date of receipt of the product under proper storage and handling conditions. Avoid repeated freeze-thaw cycles.
RefSeq:	NP_653276
Locus ID:	146395
UniProt ID:	Q6UXU4
RefSeq Size:	4538



[View online >](#)

Cytogenetics:	16p12.1
RefSeq ORF:	528
Synonyms:	PRO19651
Summary:	As a component of the inner core of AMPAR complex, modifies AMPA receptor (AMPA) gating. [UniProtKB/Swiss-Prot Function]
Protein Families:	Transmembrane

Product images:



Coomassie blue staining of purified GSG1L protein (Cat# [TP303940]). The protein was produced from HEK293T cells transfected with GSG1L cDNA clone (Cat# [RC203940]) using MegaTran 2.0 (Cat# [TT210002]).