

Product datasheet for TP303930L

PHLPP (PHLPP1) (NM_194449) Human Recombinant Protein

Product data:

| | |
|---------------------------------------|--|
| Product Type: | Recombinant Proteins |
| Description: | Recombinant protein of human PH domain and leucine rich repeat protein phosphatase (PHLPP), 1 mg |
| Species: | Human |
| Expression Host: | HEK293T |
| Expression cDNA Clone or AA Sequence: | >RC203930 representing NM_194449 Red=Cloning site Green=Tags(s) |

MDSEIGCLIRFYAGKPHSTGSSERIQLSGMYNVRKGMQLPVNRWTRRQVILCGTCLIVSSVKDSLTKGM
HVLPLIGGKVEEVKKHQHCLAFSSSGPQSQTYYICFDTFTEYLRWLRQVSKVASQRISVVDLSCCSLEHL
PANLFYSQDLTHLNLKQNFLRQNPSPALPAARGLNELQRFTKLKSLNLSNNHLGDFPLAVCSIPTLAELNVS
CNALRSVPAAVGVMHNLQTFLLDGNFLQSLPAELENMKQLSYLGLSFNEFTDIPEVLEKLTAVDKLCMSG
NCVETLRLQALRKMPHIKHVDLRLNVIRKLIADVDLQHVTLQLDLRDNKLGDLAMIFNNIEVLHCERN
QLVTLDICGYFLKALYASSNELVQLDVYPVNYLSYMDVSRNRLNENVPWVWVCSERKLEVLIDIGHNQICEL
PARLFCNSSLRKLLAGHNQLARLPERLERTSVEVLDVQHNQLELPPNLLMKADSLRFLNASANKLESPL
PATLSEETNSILQELYLTNNSLTDKCVPLLTGHPHLKILHMAYNRLQSFASKMAKLEEEIDLSGNKL
KAIPPTIMNCRMMHTVIAHSNCIEVFPEVMQLPEIKCVDLSCNELSEVTLPENLPPKLQELDLTGNPRLV
LDHKTLELLNNIRCFKIDQPSTGDASGAPAVWSHGYTEASGVKNKLCVAALSVNFCNREALYGVFDGD
RNVEVPYLLQCTMSDILAEELQTKNEEYMVNTFIVMQRKLGTAGQKLGGAVALCHIKHDPVDPGGSF
LTSANVGKQTVLCRNGKPLPLRSYIMSCEEELKRIKQHKAIITEDGKVNVTSTRILGYTFLHPSV
PRPHVQSVLLTPQDEFFILGSKGLWDSLSVEEAVEAVRNVPDALAAKKLCTLAQSYGCHDSISAVVQL
SVTEDSFCCCELSAGGAVPPPSPGIFPPSVNMVIKDRPSDGLGVPSSSSGMASEISSELSTSEMSSEVGS
TASDEPPPGALSNSPAYPSEQRCMLHPICLSNSFQRQLSSATFSSAFSDNGLDSDDEEPIEGVFTNGSR
VEVEVDIHCSRKEKEKQHQHLLQVPAEASDEGIVISANEDEPGLPRKADFSAVGTIGRRRANGSVAPQER
SHNVIEVATDAPLRKPGGYFAAPAQPDQFIIPPELEEEVKEIMKHHQEQQQQQPPPPPPQLQPQLPR
HYQLDQLPDYYDTPL

TRTRPLEQKLISEEDLAANDILDYKDDDDKV

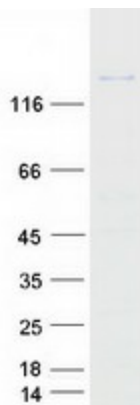
| | |
|----------------|--|
| Tag: | C-Myc/DDK |
| Predicted MW: | 184.5 kDa |
| Concentration: | >0.05 µg/µL as determined by microplate BCA method |



[View online »](#)

| | |
|----------------------|--|
| Purity: | > 80% as determined by SDS-PAGE and Coomassie blue staining |
| Buffer: | 25 mM Tris-HCl, 100 mM glycine, pH 7.3, 10% glycerol |
| Bioactivity: | Cell treatment (PMID: 26971226) |
| Preparation: | Recombinant protein was captured through anti-DDK affinity column followed by conventional chromatography steps. |
| Note: | For testing in cell culture applications, please filter before use. Note that you may experience some loss of protein during the filtration process. |
| Storage: | Store at -80°C. |
| Stability: | Stable for 12 months from the date of receipt of the product under proper storage and handling conditions. Avoid repeated freeze-thaw cycles. |
| RefSeq: | NP_919431 |
| Locus ID: | 23239 |
| UniProt ID: | O60346 |
| RefSeq Size: | 4798 |
| Cytogenetics: | 18q21.33 |
| RefSeq ORF: | 3615 |
| Synonyms: | PHLPP; PLEKHE1; PPM3A; SCOP |
| Summary: | This gene encodes a member of the serine/threonine phosphatase family. The encoded protein promotes apoptosis by dephosphorylating and inactivating the serine/threonine kinase Akt, and functions as a tumor suppressor in multiple types of cancer. Increased expression of this gene may also play a role in obesity and type 2 diabetes by interfering with Akt-mediated insulin signaling. [provided by RefSeq, Dec 2011] |

Product images:



Coomassie blue staining of purified PHLPP1 protein (Cat# [TP303930]). The protein was produced from HEK293T cells transfected with PHLPP1 cDNA clone (Cat# [RC203930]) using MegaTran 2.0 (Cat# [TT210002]).