

Product datasheet for TP303930

PHLPP (PHLPP1) (NM_194449) Human Recombinant Protein

Product data:

Product Type:	Recombinant Proteins
Description:	Recombinant protein of human PH domain and leucine rich repeat protein phosphatase (PHLPP), 20 µg
Species:	Human
Expression Host:	HEK293T
Expression cDNA Clone or AA Sequence:	>RC203930 representing NM_194449 Red=Cloning site Green=Tags(s)

MDSEIGCLIRFYAGKPHSTGSSERIQLSGMYNVRKGMQLPVNRWTRRQVILCGTCLIVSSVKDSLTKGM
HVLPLIGGKVEEVKKHQHCLAFSSSGPQSQTYYICFDTFTEYLRWLRQVSKVASQRISVVDLSCCSLEHL
PANLFYSQDLTHLNLKQNFLRQNPSPALPAARGLNELQRFTKLKSLNLSNNHLGDFPLAVCSIPTLAELNVS
CNALRSVPAAVGVMHNLQTFLLDGNFLQSLPAELENMKQLSYLGLSFNEFTDIPEVLEKLTAVDKLCMSG
NCVETLRLQALRKMPHIKHVDLRLNVIRKLIADVDLQHVTLQLDLRDNKLGDLDMIFNIEVLHCERN
QLVTLDICGYFLKALYASSNELVQLDVYPVNYLSYMDVSRNRLNENVPWVWVCSERKLEVLIDIGHNQICEL
PARLFCNSSLRKLLAGHNQLARLPERLERTSVEVLDVQHNQLELPPNLLMKADSLRFLNASANKLESPL
PATLSEETNSILQELYLTNNSLTDKCVPLLTGHPHLKILHMAYNRLQSFASKMAKLEEEIDLSGNKL
KAIPPTIMNCRMMHTVIAHSNCIEVFPEVMQLPEIKCVDLSCNELSEVTLPENLPPKLQELDLTGNPRLV
LDHKTLELLNNIRCFKIDQPSTGDASGAPAVWSHGYTEASGVKNKLCVAALSVNFCNREALYGVFDGD
RNVEVPYLLQCTMSDILAEELQTKNEEYMVNTFIVMQRKLGTAGQKLGGAVALCHIKHDPVDPGGSFT
LTSANVGKCVLTCRNGKPLPLRSYIMSCEEELKRIKQHKAIITEDGKVNVTSTRILGYTFLHPSVW
PRPHVQSVLLTPQDEFFILGSKGLWDSLSVEEAVEAVRNVPDALAAKKLCTLAQSYGCHDSISAVVWQL
SVTEDSFCCCELSAGGAVPPPSPGIFPPSVNMVIKDRPSDGLGVPSSSSGMASEISSELSTSEMSSEVGS
TASDEPPPGALSNSPAPYSEQRCLMLHPICLSNSFQRQLSSATFSSAFSDNGLDSDDEEPIEGVFTNGSR
VEVEVDIHCSRKEKEKQHQHLLQVPAEASDEGIVISANEDEPGLPRKADFSAVGTIGRRRANGSVAPQER
SHNVIEVATDAPLRKPGGYFAAPAQPDQFIIPPELEEEVKEIMKHHQEQQQQQPPPPPPQLQPQLPR
HYQLDQLPDYYDTPL

TRTRPLEQKLISEEDLAANDILDYKDDDDKV

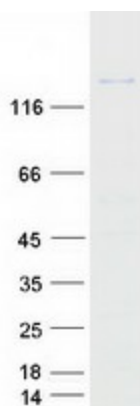
Tag:	C-Myc/DDK
Predicted MW:	184.5 kDa
Concentration:	>0.05 µg/µL as determined by microplate BCA method



[View online »](#)

Purity:	> 80% as determined by SDS-PAGE and Coomassie blue staining
Buffer:	25 mM Tris-HCl, 100 mM glycine, pH 7.3, 10% glycerol
Bioactivity:	Cell treatment (PMID: 26971226)
Preparation:	Recombinant protein was captured through anti-DDK affinity column followed by conventional chromatography steps.
Note:	For testing in cell culture applications, please filter before use. Note that you may experience some loss of protein during the filtration process.
Storage:	Store at -80°C.
Stability:	Stable for 12 months from the date of receipt of the product under proper storage and handling conditions. Avoid repeated freeze-thaw cycles.
RefSeq:	NP_919431
Locus ID:	23239
UniProt ID:	O60346
RefSeq Size:	4798
Cytogenetics:	18q21.33
RefSeq ORF:	3615
Synonyms:	PHLPP; PLEKHE1; PPM3A; SCOP
Summary:	This gene encodes a member of the serine/threonine phosphatase family. The encoded protein promotes apoptosis by dephosphorylating and inactivating the serine/threonine kinase Akt, and functions as a tumor suppressor in multiple types of cancer. Increased expression of this gene may also play a role in obesity and type 2 diabetes by interfering with Akt-mediated insulin signaling. [provided by RefSeq, Dec 2011]

Product images:



Coomassie blue staining of purified PHLPP1 protein (Cat# TP303930). The protein was produced from HEK293T cells transfected with PHLPP1 cDNA clone (Cat# [RC203930]) using MegaTran 2.0 (Cat# [TT210002]).