

Product datasheet for **TP303913M**

Dynein (DYNLL2) (NM_080677) Human Recombinant Protein

Product data:

Product Type:	Recombinant Proteins
Description:	Recombinant protein of human dynein, light chain, LC8-type 2 (DYNLL2), 100 µg
Species:	Human
Expression Host:	HEK293T
Expression cDNA Clone or AA Sequence:	>RC203913 protein sequence Red =Cloning site Green =Tags(s)
	 MSDRKAVIKNADMSEDMQQDAVDCATQAMEKYNIEKDIAAYIKKEFDKKNPTWHCIVGRNFGSYVTHET KHFIYFYLGGQVAILLFKSG TRTRPLEQKLISEEDLAANDILDYKDDDDKV
Tag:	C-Myc/DDK
Predicted MW:	10.2 kDa
Concentration:	>0.05 µg/µL as determined by microplate BCA method
Purity:	> 80% as determined by SDS-PAGE and Coomassie blue staining
Buffer:	25 mM Tris-HCl, 100 mM glycine, pH 7.3, 10% glycerol
Preparation:	Recombinant protein was captured through anti-DDK affinity column followed by conventional chromatography steps.
Note:	For testing in cell culture applications, please filter before use. Note that you may experience some loss of protein during the filtration process.
Storage:	Store at -80°C.
Stability:	Stable for 12 months from the date of receipt of the product under proper storage and handling conditions. Avoid repeated freeze-thaw cycles.
RefSeq:	NP_542408
Locus ID:	140735
UniProt ID:	Q96FJ2
RefSeq Size:	1522
Cytogenetics:	17q22



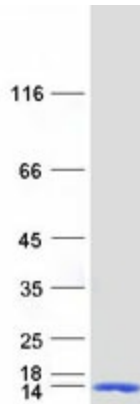
[View online »](#)

RefSeq ORF: 267

Synonyms: Dlc2; DNCL1B; RSPH22

Summary: Acts as one of several non-catalytic accessory components of the cytoplasmic dynein 1 complex that are thought to be involved in linking dynein to cargos and to adapter proteins that regulate dynein function. Cytoplasmic dynein 1 acts as a motor for the intracellular retrograde motility of vesicles and organelles along microtubules. May play a role in changing or maintaining the spatial distribution of cytoskeletal structures (By similarity). [UniProtKB/Swiss-Prot Function]

Product images:



Coomassie blue staining of purified DYNLL2 protein (Cat# [TP303913]). The protein was produced from HEK293T cells transfected with DYNLL2 cDNA clone (Cat# [RC203913]) using MegaTran 2.0 (Cat# [TT210002]).