

## Product datasheet for **TP303909M**

### MRRF (NM\_138777) Human Recombinant Protein

#### Product data:

Product Type:	Recombinant Proteins
Description:	Recombinant protein of human mitochondrial ribosome recycling factor (MRRF), nuclear gene encoding mitochondrial protein, transcript variant 1, 100 µg
Species:	Human
Expression Host:	HEK293T
Expression cDNA Clone or AA Sequence:	>RC203909 protein sequence <b>Red</b> =Cloning site <b>Green</b> =Tags(s)
	 MALGLKCFRMVHPTFRNYLAASIRPVSEVTLKTVHERQHGHHRQYMAYSAVPVRHFATKKAKAKGKGQSQT RVNINAALVEDIINLEEVNEEMKSVIEALKDNFNKTLNIRTSPGSLDKIAVVTADGKLALNQISQISMKS PQLILVNMAFPECTAAAIKAIRESGMNLNPEVEGLIRVPIQVTRHREMLVKLAKQNTNKAKDSLRLK VRTNSMNKLLKSKDTSVEDTIRLIEKQISQMADDTVAELDRHLAVKTKELLG  <b>TRTRPLEQKLISEEDLAANDILDYKDDDDKV</b>
Tag:	C-Myc/DDK
Predicted MW:	29.1 kDa
Concentration:	>0.05 µg/µL as determined by microplate BCA method
Purity:	> 80% as determined by SDS-PAGE and Coomassie blue staining
Buffer:	25 mM Tris-HCl, 100 mM glycine, pH 7.3, 10% glycerol
Preparation:	Recombinant protein was captured through anti-DDK affinity column followed by conventional chromatography steps.
Note:	For testing in cell culture applications, please filter before use. Note that you may experience some loss of protein during the filtration process.
Storage:	Store at -80°C.
Stability:	Stable for 12 months from the date of receipt of the product under proper storage and handling conditions. Avoid repeated freeze-thaw cycles.
RefSeq:	<u><a href="#">NP_620132</a></u>
Locus ID:	92399



[View online »](#)

UniProt ID: [Q96E11](#)

RefSeq Size: 2036

Cytogenetics: 9q33.2

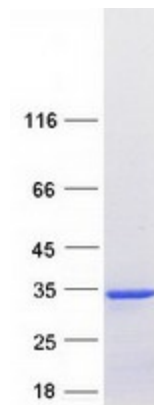
RefSeq ORF: 786

Synonyms: MRFF; MTRRF; RRF

**Summary:** This gene encodes a ribosome recycling factor, which is a component of the mitochondrial translational machinery. The encoded protein, along with mitochondrial elongation factor 2, functions in ribosomal recycling at the termination of mitochondrial translation by mediating the disassembly of ribosomes from messenger RNA. A pseudogene of this gene has been identified on chromosome X. [provided by RefSeq, Oct 2016]

**Protein Families:** Transmembrane

### Product images:



Coomassie blue staining of purified MRRF protein (Cat# [TP303909]). The protein was produced from HEK293T cells transfected with MRRF cDNA clone (Cat# [RC203909]) using MegaTran 2.0 (Cat# [TT210002]).