

Product datasheet for **TP303904L**

ABHD11 (NM_148912) Human Recombinant Protein

Product data:

Product Type: Recombinant Proteins

Description: Recombinant protein of human abhydrolase domain containing 11 (ABHD11), transcript variant 1, 1 mg

Species: Human

Expression Host: HEK293T

Expression cDNA Clone or AA Sequence: >RC203904 protein sequence
Red=Cloning site **Green**=Tags(s)

MRAGQQLASMLRWTRAWRLPREGLGPHGPSFARVPVAPSSSSGGRGGAEPRLPLSYRLLDGEAALPAVV
FLHGLFGSKTNFNIAKILAQQTGRRVLTVDARNHGDSPHSPDMSYEIMSQDLQDLLPQLGLVPCVVVGH
SMGGKTAMLLALQRPELVERLIAVDISPVESTGVSHFATYVAAMRAINIADELPRSRARKLADEQLSSVI
QDMAVRQHLLTNLVEVDGRFVWRVNLDAQTQHLDKILAFPQRQESYLGPTLFLGGNSQFVHPSHHPEIM
RLFPRMQTVPNAGHWIHADRPQDFIAAIRGFLV

TRTRPLEQKLISEEDLAANDILDYKDDDDKV

Tag: C-Myc/DDK

Predicted MW: 34.5 kDa

Concentration: >0.05 µg/µL as determined by microplate BCA method

Purity: > 80% as determined by SDS-PAGE and Coomassie blue staining

Buffer: 25 mM Tris-HCl, 100 mM glycine, pH 7.3, 10% glycerol

Preparation: Recombinant protein was captured through anti-DDK affinity column followed by conventional chromatography steps.

Note: For testing in cell culture applications, please filter before use. Note that you may experience some loss of protein during the filtration process.

Storage: Store at -80°C.

Stability: Stable for 12 months from the date of receipt of the product under proper storage and handling conditions. Avoid repeated freeze-thaw cycles.

RefSeq: [NP_683710](#)

Locus ID: 83451



[View online »](#)

UniProt ID: [Q8NFV4](#)

RefSeq Size: 1467

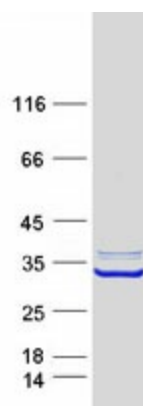
Cytogenetics: 7q11.23

RefSeq ORF: 945

Synonyms: PP1226; WBSCR21

Summary: This gene encodes a protein containing an alpha/beta hydrolase fold domain. This gene is deleted in Williams syndrome, a multisystem developmental disorder caused by the deletion of contiguous genes at 7q11.23. [provided by RefSeq, Mar 2016]

Product images:



Coomassie blue staining of purified ABHD11 protein (Cat# [TP303904]). The protein was produced from HEK293T cells transfected with ABHD11 cDNA clone (Cat# [RC203904]) using MegaTran 2.0 (Cat# [TT210002]).