

Product datasheet for **TP303892**

GNGT2 (NM_031498) Human Recombinant Protein

Product data:

Product Type:	Recombinant Proteins
Description:	Recombinant protein of human guanine nucleotide binding protein (G protein), gamma transducing activity polypeptide 2 (GNGT2), 20 µg
Species:	Human
Expression Host:	HEK293T
Expression cDNA Clone or AA Sequence:	>RC203892 protein sequence Red =Cloning site Green =Tags(s)
	MAQDLSEKDLLKMEVEQLKKEVKNTRIPISKAGKEIKEYVEAQAGNDPFLKGIPEDKNPFKEKGGCLIS
	TRTRPLEQKLISEEDLAANDILDYKDDDDKV
Tag:	C-Myc/DDK
Predicted MW:	7.6 kDa
Concentration:	>0.05 µg/µL as determined by microplate BCA method
Purity:	> 80% as determined by SDS-PAGE and Coomassie blue staining
Buffer:	25 mM Tris-HCl, 100 mM glycine, pH 7.3, 10% glycerol
Preparation:	Recombinant protein was captured through anti-DDK affinity column followed by conventional chromatography steps.
Note:	For testing in cell culture applications, please filter before use. Note that you may experience some loss of protein during the filtration process.
Storage:	Store at -80°C.
Stability:	Stable for 12 months from the date of receipt of the product under proper storage and handling conditions. Avoid repeated freeze-thaw cycles.
RefSeq:	NP_113686
Locus ID:	2793
UniProt ID:	O14610
RefSeq Size:	1057
Cytogenetics:	17q21.32



[View online »](#)

RefSeq ORF: 207

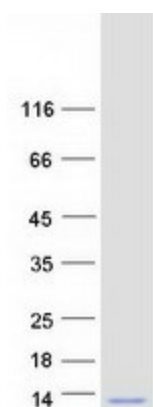
Synonyms: G-GAMMA-8; G-GAMMA-C; GNG9; GNGT8

Summary: Phototransduction in rod and cone photoreceptors is regulated by groups of signaling proteins. The encoded protein is thought to play a crucial role in cone phototransduction. It belongs to the G protein gamma family and localized specifically in cones. Several transcript variants encoding the same protein have been found for this gene. [provided by RefSeq, Nov 2010]

Protein Families: Druggable Genome

Protein Pathways: Chemokine signaling pathway

Product images:



Coomassie blue staining of purified GNGT2 protein (Cat# TP303892). The protein was produced from HEK293T cells transfected with GNGT2 cDNA clone (Cat# [RC203892]) using MegaTran 2.0 (Cat# [TT210002]).