

Product datasheet for **TP303890M**

CCDC51 (NM_024661) Human Recombinant Protein

Product data:

| | |
|---------------------------------------|--|
| Product Type: | Recombinant Proteins |
| Description: | Recombinant protein of human coiled-coil domain containing 51 (CCDC51), 100 µg |
| Species: | Human |
| Expression Host: | HEK293T |
| Expression cDNA Clone or AA Sequence: | >RC203890 protein sequence Red =Cloning site Green =Tags(s) |

MTRTLCSPGPSQPGEKRPEEVALGLHHRLPALGRALGHSIQQRATSTAKTWWDRIYEEFVGLNEVREAQGK
VTEAEKVMVARGLVREAREDLEVHQAKLKEVRDRLDRVSREDSQYLELATLEHRMLQEEKRLRTAYLRA
EDSEREKFSLSAAVRESHEKERTRAERTKNWLSLIGSVLALIGVAGSTYVNRVRLQELKALLLEAQKGP
VSLQEAIREQASSYSRQQRDLHNLMDLRGLVHAAGPGQDSGSQAGSPPTRDRDVLVSAALKEQLSHSR
QVHSCLEGLREQLDGLEKTCMQMAGVVQLVKSAAHPGLVEPADGAMPSPFLLEQGSMLALSDETEQRLEAQ
VNRNTIYSTLVTCVTFVATLPVLYMLFKAS

TRTRPLEQKLISEEDLAANDILDYKDDDDKV

| | |
|----------------|--|
| Tag: | C-Myc/DDK |
| Predicted MW: | 45.6 kDa |
| Concentration: | >0.05 µg/µL as determined by microplate BCA method |
| Purity: | > 80% as determined by SDS-PAGE and Coomassie blue staining |
| Buffer: | 25 mM Tris-HCl, 100 mM glycine, pH 7.3, 10% glycerol |
| Preparation: | Recombinant protein was captured through anti-DDK affinity column followed by conventional chromatography steps. |
| Note: | For testing in cell culture applications, please filter before use. Note that you may experience some loss of protein during the filtration process. |
| Storage: | Store at -80°C. |
| Stability: | Stable for 12 months from the date of receipt of the product under proper storage and handling conditions. Avoid repeated freeze-thaw cycles. |
| RefSeq: | NP_078937 |
| Locus ID: | 79714 |



[View online »](#)

UniProt ID: [Q96ER9](#)

RefSeq Size: 1519

Cytogenetics: 3p21.31

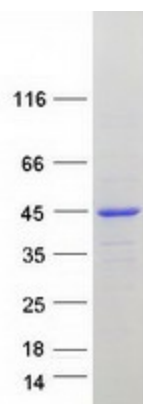
RefSeq ORF: 1140

Synonyms: MITOK

Summary: Mitochondrial potassium channel located in the mitochondrial inner membrane (PubMed:31435016). Together with ABCB8/MITOSUR, forms a protein complex localized in the mitochondria that mediates ATP-dependent potassium currents across the inner membrane (that is, mitoK(ATP) channel) (PubMed:31435016). May contribute to the homeostatic control of cellular metabolism under stress conditions by regulating the mitochondrial matrix volume (PubMed:31435016).[UniProtKB/Swiss-Prot Function]

Protein Families: Transmembrane

Product images:



Coomassie blue staining of purified CCDC51 protein (Cat# [TP303890]). The protein was produced from HEK293T cells transfected with CCDC51 cDNA clone (Cat# [RC203890]) using MegaTran 2.0 (Cat# [TT210002]).