

## Product datasheet for **TP303886**

### **c20orf72 (MGME1) (NM\_052865) Human Recombinant Protein**

#### Product data:

Product Type:	Recombinant Proteins
Description:	Recombinant protein of human chromosome 20 open reading frame 72 (C20orf72), 20 µg
Species:	Human
Expression Host:	HEK293T
Expression cDNA Clone or AA Sequence:	>RC203886 protein sequence <b>Red</b> =Cloning site <b>Green</b> =Tags(s)
	<p>MKMKLRFQTICRQLRSSKFSVESAAALVAFSTSSYSCGRKKKVNPNYEEVDQEKYSNLVQSVLSSRGVAQTPG SVEEDALLCGPVSKHKLPNQGEDRRVPQNWFIPIFNPERSDKPNASDPSVPLKIPLQRNVIPSVTRVLQQT MTKQQVFLERWKQRMILELGEDGFKEYTSNVFLQGKRFHEALESILSPQETLKERDENLLKSGYIESVQ HILKDVSGVRALESVQHETLNYIGLLDCVAEYQGKLCVIDWKTSEKPKPFIQSTFDNPLQVWAYMGAMN HDTNYSFQVQCGLIVWAYKDGSPAHPHFMDAELCSQYWTKWLLRLEEYTEKKKNQNIQKPEYSE</p> <p><b>TRTRPLEQKLISEEDLAANDILDYKDDDDKV</b></p>
Tag:	C-Myc/DDK
Predicted MW:	39.2 kDa
Concentration:	>0.05 µg/µL as determined by microplate BCA method
Purity:	> 80% as determined by SDS-PAGE and Coomassie blue staining
Buffer:	25 mM Tris-HCl, 100 mM glycine, pH 7.3, 10% glycerol
Preparation:	Recombinant protein was captured through anti-DDK affinity column followed by conventional chromatography steps.
Note:	For testing in cell culture applications, please filter before use. Note that you may experience some loss of protein during the filtration process.
Storage:	Store at -80°C.
Stability:	Stable for 12 months from the date of receipt of the product under proper storage and handling conditions. Avoid repeated freeze-thaw cycles.
RefSeq:	<u><a href="#">NP_443097</a></u>
Locus ID:	92667

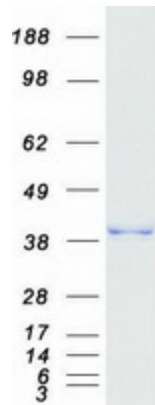


[View online »](#)

UniProt ID: [Q9BQP7](#)  
RefSeq Size: 2142  
Cytogenetics: 20p11.23  
RefSeq ORF: 1032  
Synonyms: bA504H3.4; C20orf72; DDK1; MTDPS11

**Summary:** The protein encoded by this gene is a nuclear-encoded mitochondrial protein necessary for the maintenance of mitochondrial genome synthesis. The encoded protein is a RecB-type exonuclease and primarily cleaves single-stranded DNA. Defects in this gene have been associated with mitochondrial DNA depletion syndrome-11. Three transcript variants encoding different isoforms have been found for this gene. [provided by RefSeq, Jul 2015]

### Product images:



Coomassie blue staining of purified MGME1 protein (Cat# TP303886). The protein was produced from HEK293T cells transfected with MGME1 cDNA clone (Cat# [RC203886]) using MegaTran 2.0 (Cat# [TT210002]).