

Product datasheet for **TP303885L**

ESAM (NM_138961) Human Recombinant Protein

Product data:

Product Type: Recombinant Proteins

Description: Recombinant protein of human endothelial cell adhesion molecule (ESAM), 1 mg

Species: Human

Expression Host: HEK293T

**Expression cDNA Clone
or AA Sequence:** >RC203885 protein sequence
Red=Cloning site **Green**=Tags(s)

MISLPGPLVTNLLRFLFLGLSALAPPSRAQLQLHLPANRLQAVEGGEVLPAWYTLHGEVSSSQPWEVPP
VMWFFKQKEKEDQVLSYINGVTTSKPGVSLVYSMPSRNLSLRLEGLQEKDSGPYSCSVNVQDKQGKSRGH
SIKTLELNLVPPAPPSCRLQGVPVHGANVTLSQCSPRSKPAVQYQWDRQLPSFQTFPAPALDVIRGSL
LTNLSSSMAGVYVCKAHNEVGTAQCNVTLEVSTGPGAAWAGAVGTLVGLGLLAGLVLLYHRRGKALEE
PANDIKEDAIPRTLWPWKSSDTISKNGTLSSVTSARALRPPHGPGRGALTPTPSLSSQALPSPRLPTT
DGAHPQPISPIPGGVSSSGLSRMGAVPVMVPAQSQAGSLV

TRTRPLEQKLISEEDLAANDILDYKDDDDKV

Tag: C-Myc/DDK

Predicted MW: 41 kDa

Concentration: >0.05 µg/µL as determined by microplate BCA method

Purity: > 80% as determined by SDS-PAGE and Coomassie blue staining

Buffer: 25 mM Tris-HCl, 100 mM glycine, pH 7.3, 10% glycerol

Preparation: Recombinant protein was captured through anti-DDK affinity column followed by conventional chromatography steps.

Note: For testing in cell culture applications, please filter before use. Note that you may experience some loss of protein during the filtration process.

Storage: Store at -80°C.

Stability: Stable for 12 months from the date of receipt of the product under proper storage and handling conditions. Avoid repeated freeze-thaw cycles.

RefSeq: [NP_620411](#)

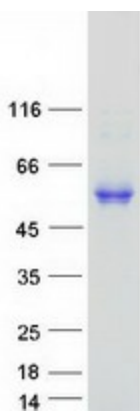
Locus ID: 90952



[View online »](#)

UniProt ID:	Q96AP7
RefSeq Size:	1869
Cytogenetics:	11q24.2
RefSeq ORF:	1170
Synonyms:	W117m
Summary:	Can mediate aggregation most likely through a homophilic molecular interaction. [UniProtKB/Swiss-Prot Function]
Protein Families:	Druggable Genome, Transmembrane
Protein Pathways:	Cell adhesion molecules (CAMs), Leukocyte transendothelial migration

Product images:



Coomassie blue staining of purified ESAM protein (Cat# [TP303885]). The protein was produced from HEK293T cells transfected with ESAM cDNA clone (Cat# [RC203885]) using MegaTran 2.0 (Cat# [TT210002]).