

Product datasheet for **TP303885**

ESAM (NM_138961) Human Recombinant Protein

Product data:

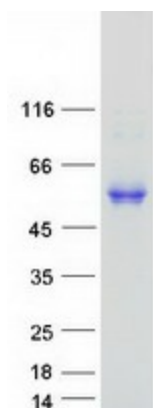
Product Type:	Recombinant Proteins
Description:	Recombinant protein of human endothelial cell adhesion molecule (ESAM), 20 µg
Species:	Human
Expression Host:	HEK293T
Expression cDNA Clone or AA Sequence:	>RC203885 protein sequence Red =Cloning site Green =Tags(s)
	<p>MISLPGPLVTNLLRFLFLGLSALAPPSRAQLQLHLPANRLQAVEGGVWLPAWYTLHGEVSSSQPWVPPF VMWFFKQKEKEDQVLSYINGVTTSKPGVSLVYSMPSRNLSLRLEGLQEKDSGPYSCSVNVQDKQGKSRG H SIKTLELNVLPAPPSCRLQGVPVHGAVNTLSCQSPRSKPAVQYQWDRQLPSFQTFAPALDVIRGSL LTNLSSMAGVYVCKAHNEVGTAQCNTLEVSTGPGA AVVAGAVGTLVGLGLLAGLVLLYHRRGKALEE PANDIKEDAIAPRTLWPVKSSDTISKNGTLSSVTSARALRPPHGPPRPGALTPTPSLSSQALPSRLPTT DGAHPQIPISPIPGGVSSSGLSRMGAVPVMVPAQSQAGSLV</p> <p>TRTRPLEQKLISEEDLAANDILDYKDDDDKV</p>
Tag:	C-Myc/DDK
Predicted MW:	41 kDa
Concentration:	>0.05 µg/µL as determined by microplate BCA method
Purity:	> 80% as determined by SDS-PAGE and Coomassie blue staining
Buffer:	25 mM Tris-HCl, 100 mM glycine, pH 7.3, 10% glycerol
Preparation:	Recombinant protein was captured through anti-DDK affinity column followed by conventional chromatography steps.
Note:	For testing in cell culture applications, please filter before use. Note that you may experience some loss of protein during the filtration process.
Storage:	Store at -80°C.
Stability:	Stable for 12 months from the date of receipt of the product under proper storage and handling conditions. Avoid repeated freeze-thaw cycles.
RefSeq:	<u>NP_620411</u>



[View online »](#)

Locus ID:	90952
UniProt ID:	Q96AP7
RefSeq Size:	1869
Cytogenetics:	11q24.2
RefSeq ORF:	1170
Synonyms:	W117m
Summary:	Can mediate aggregation most likely through a homophilic molecular interaction. [UniProtKB/Swiss-Prot Function]
Protein Families:	Druggable Genome, Transmembrane
Protein Pathways:	Cell adhesion molecules (CAMs), Leukocyte transendothelial migration

Product images:



Coomassie blue staining of purified ESAM protein (Cat# TP303885). The protein was produced from HEK293T cells transfected with ESAM cDNA clone (Cat# [RC203885]) using MegaTran 2.0 (Cat# [TT210002]).