

## Product datasheet for **TP303879M**

### **S100A16 (NM\_080388) Human Recombinant Protein**

#### Product data:

Product Type:	Recombinant Proteins
Description:	Purified recombinant protein of Homo sapiens S100 calcium binding protein A16 (S100A16), 100 µg
Species:	Human
Expression Host:	HEK293T
Expression cDNA Clone or AA Sequence:	>RC203879 representing NM_080388 <b>Red</b> =Cloning site <b>Green</b> =Tags(s)
	 MSDCYTELEKAVIVLVENFYKYVSKYSLVKNKISKSSFREMLQKELNHMLSDTGNRKAADKLIQNLDANH DGRISFDEYWTLIGGITGPIAKLIHEQEQSSS  <b>TRTRPLEQKLISEEDLAANDILDYKDDDDKV</b>
Tag:	C-Myc/DDK
Predicted MW:	11.6 kDa
Concentration:	>0.05 µg/µL as determined by microplate BCA method
Purity:	> 80% as determined by SDS-PAGE and Coomassie blue staining
Buffer:	25 mM Tris-HCl, 100 mM glycine, pH 7.3, 10% glycerol
Preparation:	Recombinant protein was captured through anti-DDK affinity column followed by conventional chromatography steps.
Note:	For testing in cell culture applications, please filter before use. Note that you may experience some loss of protein during the filtration process.
Storage:	Store at -80°C.
Stability:	Stable for 12 months from the date of receipt of the product under proper storage and handling conditions. Avoid repeated freeze-thaw cycles.
RefSeq:	<a href="#">NP_525127</a>
Locus ID:	140576
UniProt ID:	<a href="#">Q96FQ6</a>
RefSeq Size:	1085



[View online »](#)

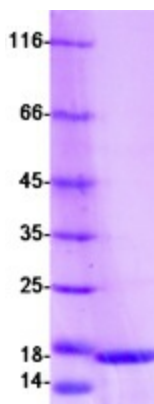
Cytogenetics: 1q21.3

RefSeq ORF: 309

Synonyms: AAG13; DT1P1A7; S100F

Summary: Calcium-binding protein. Binds one calcium ion per monomer (PubMed:17030513). Can promote differentiation of adipocytes (in vitro) (By similarity). Overexpression in preadipocytes increases their proliferation, enhances adipogenesis and reduces insulin-stimulated glucose uptake (By similarity).[UniProtKB/Swiss-Prot Function]

### Product images:



Coomassie blue staining of purified S100A16 protein (Cat# [TP303879]). The protein was produced from HEK293T cells transfected with S100A16 cDNA clone (Cat# [RC203879]) using MegaTran 2.0 (Cat# [TT210002]).