

## Product datasheet for **TP303868L**

### ARL11 (NM\_138450) Human Recombinant Protein

#### Product data:

Product Type:	Recombinant Proteins
Description:	Recombinant protein of human ADP-ribosylation factor-like 11 (ARL11), 1 mg
Species:	Human
Expression Host:	HEK293T
Expression cDNA Clone or AA Sequence:	>RC203868 protein sequence <b>Red</b> =Cloning site <b>Green</b> =Tags(s)
	 MGSVNSRGGHKAEAQVMMGLDSAGKTTLLYKLGKQHLVETLPTVGFNVEPLKAPGHVSLTLWDVGGQAPL RASWKDYLEGTDILVYVLDSTDEARLPESAAELTEVLNDPNMAGVPFLVLANKQEAPDALPLLKIRNRLS LERFQDHCWELRGCSALTGEGLEALQSLWSLLKSRSCMCLQARAHGAERGDSKRS  <b>TRTRPLEQKLISEEDLAANDILDYKDDDDKV</b>
Tag:	C-Myc/DDK
Predicted MW:	21.2 kDa
Concentration:	>0.05 µg/µL as determined by microplate BCA method
Purity:	> 80% as determined by SDS-PAGE and Coomassie blue staining
Buffer:	25 mM Tris-HCl, 100 mM glycine, pH 7.3, 10% glycerol
Preparation:	Recombinant protein was captured through anti-DDK affinity column followed by conventional chromatography steps.
Note:	For testing in cell culture applications, please filter before use. Note that you may experience some loss of protein during the filtration process.
Storage:	Store at -80°C.
Stability:	Stable for 12 months from the date of receipt of the product under proper storage and handling conditions. Avoid repeated freeze-thaw cycles.
RefSeq:	<a href="#">NP_612459</a>
Locus ID:	115761
UniProt ID:	<a href="#">Q969Q4</a>
RefSeq Size:	3760



[View online »](#)

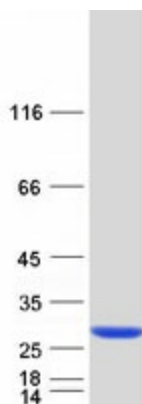
Cytogenetics: 13q14.2

RefSeq ORF: 588

Synonyms: ARLTS1

**Summary:** This gene encodes a tumor suppressor related to the ADP-ribosylation factor (ARF) family of proteins. The encoded protein may play a role in apoptosis in a caspase-dependent manner. Polymorphisms in this gene have been associated with some familial cancers. [provided by RefSeq, May 2010]

### Product images:



Coomassie blue staining of purified ARL11 protein (Cat# [TP303868]). The protein was produced from HEK293T cells transfected with ARL11 cDNA clone (Cat# [RC203868]) using MegaTran 2.0 (Cat# [TT210002]).