

## Product datasheet for TP303858M

### MASTL (NM\_032844) Human Recombinant Protein

#### Product data:

Product Type:	Recombinant Proteins
Description:	Recombinant protein of human microtubule associated serine/threonine kinase-like (MASTL), 100 µg
Species:	Human
Expression Host:	HEK293T
Expression cDNA Clone or AA Sequence:	>RC203858 protein sequence Red=Cloning site Green=Tags(s)

MDPTAGSKKEPGGGAATEEGVNRIAVPKPPSIEEFSIVKPISRGAFGKVVYLGQKGGKLYAVKVVKKADMI  
NKNMTHQVQAERDALALSKSPFIVHLYSLQSANNVYLVMEYLIGGDVKSLHLYGYFDEEMAVKYISEV  
ALALDYLHRHGIIHRDLKPDNMLISNEGHIKLTDFGLSKVTLNRDINMMDILTPSMAPRQDYSRTPGQ  
VLSLISSLGFNTPIAEKNQDPANILSACLSETSLSQGLVCPMSVDQKDTTPYSSKLLKSCLETVASNPG  
MPVKCLTSNLLQSRKRLATSSASSQSHTFISSVESECHSSPKWEKDCQESDEALGPTMMSWNAVEKLC  
SANAIETKGFNKKDLELALSPIHNSSALPTTGRSCVNLAKKCFSGEVSWEAVELDVNNINMDTDTSQLGF  
HQSNQWAVDSGGISEEHLGKRSLKRNFEVDSSPCKKIIQNKKTCVEYKHNEMTNICYNTQNTGLTVEVQD  
LKLSVHKSQQNDCANKENIVNSFTDKQQTPEKLPIMIAKNLMCELEDEDCEKNSKRDYLSLSSFLCSDDDR  
ASKNISMNSDSSFPGISIMESPLESQPLSDRSIKESSFEESNIEDPLIVTPDCQEKTSKPGVENPAVQE  
SNQKMLGPPLEVLKTLASKRNAVAFRSFNSHINASNNSEPSRMNMTSLDAMDISCAYSGSYPMAITPTQK  
RRSCMPHQQTTPNQIKSGTPYRTPKSVRRGVAPVDDGRILGTPDYLAPELLLGRAHGPVAVDWWALGVCLFE  
FLTGIPPFNDETPQQVFQNILKRDIPWPEGEEKLSDNAQSAVEILLTIDDTKRAGMKELKRHPLFSDVDW  
ENLQHQTMPFIPQPDDDETDSYFEARNTAQHLTVSGFSL

TRTRPLEQKLISEEDLAANDILDYKDDDDKV

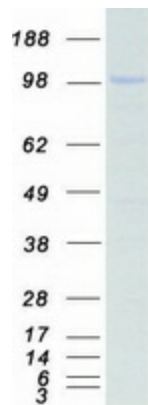
Tag:	C-Myc/DDK
Predicted MW:	97 kDa
Concentration:	>0.05 µg/µL as determined by microplate BCA method
Purity:	> 80% as determined by SDS-PAGE and Coomassie blue staining
Buffer:	25 mM Tris-HCl, 100 mM glycine, pH 7.3, 10% glycerol
Preparation:	Recombinant protein was captured through anti-DDK affinity column followed by conventional chromatography steps.



[View online »](#)

<b>Note:</b>	For testing in cell culture applications, please filter before use. Note that you may experience some loss of protein during the filtration process.
<b>Storage:</b>	Store at -80°C.
<b>Stability:</b>	Stable for 12 months from the date of receipt of the product under proper storage and handling conditions. Avoid repeated freeze-thaw cycles.
<b>RefSeq:</b>	<a href="#">NP_116233</a>
<b>Locus ID:</b>	84930
<b>UniProt ID:</b>	<a href="#">Q96GX5</a>
<b>RefSeq Size:</b>	3623
<b>Cytogenetics:</b>	10p12.1
<b>RefSeq ORF:</b>	2637
<b>Synonyms:</b>	GREATWALL; GW; GWL; MAST-L; THC2
<b>Summary:</b>	This gene encodes a microtubule-associated serine/threonine kinase. Mutations at this locus have been associated with autosomal dominant thrombocytopenia, also known as thrombocytopenia-2. Alternatively spliced transcript variants have been described for this locus. [provided by RefSeq, Feb 2010]
<b>Protein Families:</b>	Druggable Genome, Protein Kinase

### Product images:



Coomassie blue staining of purified MASTL protein (Cat# [TP303858]). The protein was produced from HEK293T cells transfected with MASTL cDNA clone (Cat# [RC203858]) using MegaTran 2.0 (Cat# [TT210002]).