

Product datasheet for **TP303858L**

MASTL (NM_032844) Human Recombinant Protein

Product data:

Product Type:	Recombinant Proteins
Description:	Recombinant protein of human microtubule associated serine/threonine kinase-like (MASTL), 1 mg
Species:	Human
Expression Host:	HEK293T
Expression cDNA Clone or AA Sequence:	>RC203858 protein sequence Red =Cloning site Green =Tags(s)

MDPTAGSKKEPGGGAATEEGVNRIAVPKPPSIEEFSIVKPISRGAFGKVVYLGQKGGKLYAVKVVKKADMI
NKNMTHQVQAERDALALSKSPFIVHLYSLQSANNVYLVMEYLIGGDVKSLHLYGYFDEEMAVKYISEV
ALALDYLHRHGIIHRDLKPDNMLISNEGHIKLTDFGLSKVTLNRDINMMDILTPSMAPRQDYSRTPGQ
VLSLISSLGFNTPIAEKNQDPANILSACLSETSLSQGLVCPMSVDQKDTTPYSSKLLKSCLETVASNPG
MPVKCLTSNLLQSRKRLATSSASSQSHTFISSEVESECHSSPKWEKDCQESDEALGPTMMSWNAVEKLC
SANAIETKGFNKKDLELALSPIHNSSALPTTGRSCVNLAKKCFSGEVSWEAVELDVNNINMDTDTSQLGF
HQSNQWAVDSGGISEEHLGKRSLKRNFEVDSSPCKKIIQNKKTCVEYKHNEMTNICYNTQNTGLTVEVQD
LKLSVHKSQQNDCANKENIVNSFTDKQQTPEKLPIMIAKNLMCELEDEDCEKNSKRDYLSLSSFLCSDDDR
ASKNISMNSDSSFPGISIMESPLESQPLSDRSIKESSFEESNIEDPLIVTPDCQEKTSKPGVENPAVQE
SNQKMLGPPLEVLKTLASKRNAVAFRFSNASHINASNSEPSRMNMTSLDAMDISCAYSGSYPMAITPTQK
RRSCMPHQQTNPQIKSGTPYRTPKSVRRGVAPVDDGRILGTPDYLAPELLLGRAHGPVAVDWWALGVCLFE
FLTGIPPFNDETPQQVFQNILKRDIPWPEGEEKLSDNAQSAVEILLTIDDTKRAGMKELKRHPLFSDVDW
ENLQHQTMPFIPQPDDDETDSYFEARNTAQHLTVSGFSL

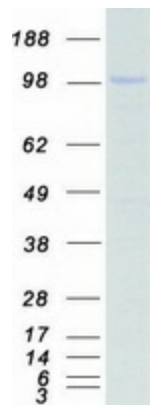
TRTRPLEQKLISEEDLAANDILDYKDDDDKV

Tag:	C-Myc/DDK
Predicted MW:	97 kDa
Concentration:	>0.05 µg/µL as determined by microplate BCA method
Purity:	> 80% as determined by SDS-PAGE and Coomassie blue staining
Buffer:	25 mM Tris-HCl, 100 mM glycine, pH 7.3, 10% glycerol
Preparation:	Recombinant protein was captured through anti-DDK affinity column followed by conventional chromatography steps.



[View online >](#)

Note:	For testing in cell culture applications, please filter before use. Note that you may experience some loss of protein during the filtration process.
Storage:	Store at -80°C.
Stability:	Stable for 12 months from the date of receipt of the product under proper storage and handling conditions. Avoid repeated freeze-thaw cycles.
RefSeq:	NP_116233
Locus ID:	84930
UniProt ID:	Q96GX5
RefSeq Size:	3623
Cytogenetics:	10p12.1
RefSeq ORF:	2637
Synonyms:	GREATWALL; GW; GWL; MAST-L; THC2
Summary:	This gene encodes a microtubule-associated serine/threonine kinase. Mutations at this locus have been associated with autosomal dominant thrombocytopenia, also known as thrombocytopenia-2. Alternatively spliced transcript variants have been described for this locus. [provided by RefSeq, Feb 2010]
Protein Families:	Druggable Genome, Protein Kinase

Product images:

Coomassie blue staining of purified MASTL protein (Cat# [TP303858]). The protein was produced from HEK293T cells transfected with MASTL cDNA clone (Cat# [RC203858]) using MegaTran 2.0 (Cat# [TT210002]).