

Product datasheet for **TP303857**

FAM122A (NM_138333) Human Recombinant Protein

Product data:

Product Type:	Recombinant Proteins
Description:	Recombinant protein of human family with sequence similarity 122A (FAM122A), 20 µg
Species:	Human
Expression Host:	HEK293T
Expression cDNA Clone or AA Sequence:	>RC203857 protein sequence Red =Cloning site Green =Tags(s)
	 MAQEKMELDLELPPGTGGSPAEGGGGGGLRRSNSAPLIHGLSDTSPVFQAEAPSARRNSTTFPSRHG LLLPAASPVRMHSSRLHQIKQEEGMDLINRETVHEREVQTAMQISHSWEESFSLSDNDVEKSASPKRIDFI PVSPASPTRGIGKQCFPSLQSFVSSNGLPPSPIPSPTRFRTRRSQSPINCIRPSVLGPLKRKCEMET EYQPKRFFQGITNMLSSDVAQLSDPGVCVSSDTLDGNSSSAGSSCNSPAKVSTTTDSPVSPAQAASPFIP LDELSSK TRTRPLEQKLISEEDLAANDILDYKDDDDKV
Tag:	C-Myc/DDK
Predicted MW:	30.3 kDa
Concentration:	>0.05 µg/µL as determined by microplate BCA method
Purity:	> 80% as determined by SDS-PAGE and Coomassie blue staining
Buffer:	25 mM Tris-HCl, 100 mM glycine, pH 7.3, 10% glycerol
Preparation:	Recombinant protein was captured through anti-DDK affinity column followed by conventional chromatography steps.
Note:	For testing in cell culture applications, please filter before use. Note that you may experience some loss of protein during the filtration process.
Storage:	Store at -80°C.
Stability:	Stable for 12 months from the date of receipt of the product under proper storage and handling conditions. Avoid repeated freeze-thaw cycles.
RefSeq:	NP_612206
Locus ID:	116224



[View online »](#)

UniProt ID: [Q96E09](#), [A0A590UJT9](#), [B3KX07](#)

RefSeq Size: 3646

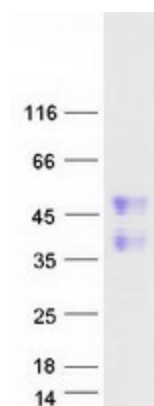
Cytogenetics: 9q21.11

RefSeq ORF: 861

Synonyms: C9orf42

Summary: Acts as an inhibitor of serine/threonine-protein phosphatase 2A (PP2A) activity. Potentiates ubiquitin-mediated proteasomal degradation of serine/threonine-protein phosphatase 2A catalytic subunit alpha (PPP2CA).[UniProtKB/Swiss-Prot Function]

Product images:



Coomassie blue staining of purified FAM122A protein (Cat# TP303857). The protein was produced from HEK293T cells transfected with FAM122A cDNA clone (Cat# [RC203857]) using MegaTran 2.0 (Cat# [TT210002]).