

Product datasheet for **TP303854L**

NORE1 (RASSF5) (NM_182665) Human Recombinant Protein

Product data:

Product Type:	Recombinant Proteins
Description:	Recombinant protein of human Ras association (RalGDS/AF-6) domain family member 5 (RASSF5), transcript variant 3, 1 mg
Species:	Human
Expression Host:	HEK293T
Expression cDNA Clone or AA Sequence:	>RC203854 protein sequence Red =Cloning site Green =Tags(s)

MTVDSSMSSGYCSLDEELEDCCFFTAKTFFRNAQSKHLSKNVCKPVEETQRPPTLQEIKQKIDSYNTREK
NCLGMKLSGDGTYTGFIKVLKLRPVTVPAGIRPQSIYDAIKEVNLAATTDKRTSFYLPDAIKQLHIS
STTTVSEVIQGLLKKFMVVDNPQKFALFKRIHKDQVLFQKLSIADRPLYRLLAGPDTEVLSFVLKENE
TGEVEWDAFSIPELQNFLTILEKEEQDKIQVQKKYDKFRQKLEALRESQGKPG

TRTRPLEQKLISEEDLAANDILDYKDDDDKV

Tag:	C-Myc/DDK
Predicted MW:	30.2 kDa
Concentration:	>0.05 µg/µL as determined by microplate BCA method
Purity:	> 80% as determined by SDS-PAGE and Coomassie blue staining
Buffer:	25 mM Tris-HCl, 100 mM glycine, pH 7.3, 10% glycerol
Preparation:	Recombinant protein was captured through anti-DDK affinity column followed by conventional chromatography steps.
Note:	For testing in cell culture applications, please filter before use. Note that you may experience some loss of protein during the filtration process.
Storage:	Store at -80°C.
Stability:	Stable for 12 months from the date of receipt of the product under proper storage and handling conditions. Avoid repeated freeze-thaw cycles.
RefSeq:	NP_872606
Locus ID:	83593



[View online »](#)

UniProt ID: [Q8WWW0](#)

RefSeq Size: 3531

Cytogenetics: 1q32.1

RefSeq ORF: 795

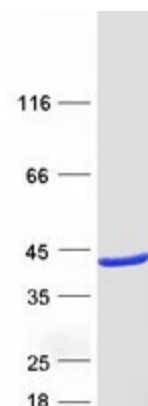
Synonyms: Maxp1; NORE1; NORE1A; NORE1B; RAPL; RASSF3

Summary: This gene is a member of the Ras association domain family. It functions as a tumor suppressor, and is inactivated in a variety of cancers. The encoded protein localizes to centrosomes and microtubules, and associates with the GTP-activated forms of Ras, Rap1, and several other Ras-like small GTPases. The protein regulates lymphocyte adhesion and suppresses cell growth in response to activated Rap1 or Ras. Multiple transcript variants encoding different isoforms have been found for this gene. [provided by RefSeq, Jul 2008]

Protein Families: Druggable Genome

Protein Pathways: Leukocyte transendothelial migration, Non-small cell lung cancer, Pathways in cancer

Product images:



Coomassie blue staining of purified RASSF5 protein (Cat# [TP303854]). The protein was produced from HEK293T cells transfected with RASSF5 cDNA clone (Cat# [RC203854]) using MegaTran 2.0 (Cat# [TT210002]).