

Product datasheet for **TP303844L**

BORCS5 (NM_058169) Human Recombinant Protein

Product data:

Product Type:	Recombinant Proteins
Description:	Recombinant protein of human loss of heterozygosity, 12, chromosomal region 1 (LOH12CR1), 1 mg
Species:	Human
Expression Host:	HEK293T
Expression cDNA Clone or AA Sequence:	>RC203844 protein sequence Red =Cloning site Green =Tags(s)

MGSEQSSEAESRPNDLNSSVTPSPAKHRAKMDDIWVAQGSQASRNVSNDPDKVIKLEIPTFQPLLKGLL
SGQTSPTNAKLEKLDSSQVLQLCLRYQDHLHQCAEAVAFDQNALVKRIKEMDLVETLFSFMQERQKRYA
KYAEQIQKVNEMSAILRRIQMIGIDQTVPLLDRLNSMLPEGERLEPFSMKPDRELRL

TRTRPLEQKLISEEDLAANDILDYKDDDDKV

Tag:	C-Myc/DDK
Predicted MW:	22 kDa
Concentration:	>0.05 µg/µL as determined by microplate BCA method
Purity:	> 80% as determined by SDS-PAGE and Coomassie blue staining
Buffer:	25 mM Tris-HCl, 100 mM glycine, pH 7.3, 10% glycerol
Preparation:	Recombinant protein was captured through anti-DDK affinity column followed by conventional chromatography steps.
Note:	For testing in cell culture applications, please filter before use. Note that you may experience some loss of protein during the filtration process.
Storage:	Store at -80°C.
Stability:	Stable for 12 months from the date of receipt of the product under proper storage and handling conditions. Avoid repeated freeze-thaw cycles.
RefSeq:	NP_477517
Locus ID:	118426
UniProt ID:	Q969J3



[View online »](#)

RefSeq Size: 2092

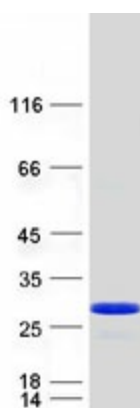
Cytogenetics: 12p13.2

RefSeq ORF: 588

Synonyms: LOH1CR12; LOH12CR1

Summary: As part of the BORC complex may play a role in lysosomes movement and localization at the cell periphery. Associated with the cytosolic face of lysosomes, the BORC complex may recruit ARL8B and couple lysosomes to microtubule plus-end-directed kinesin motor. Thereby, it may indirectly play a role in cell spreading and motility.[UniProtKB/Swiss-Prot Function]

Product images:



Coomassie blue staining of purified BORCS5 protein (Cat# [TP303844]). The protein was produced from HEK293T cells transfected with BORCS5 cDNA clone (Cat# [RC203844]) using MegaTran 2.0 (Cat# [TT210002]).