

## Product datasheet for **TP303824M**

### **GDI1 (NM\_001493) Human Recombinant Protein**

#### **Product data:**

<b>Product Type:</b>	Recombinant Proteins
<b>Description:</b>	Recombinant protein of human GDP dissociation inhibitor 1 (GDI1), 100 µg
<b>Species:</b>	Human
<b>Expression Host:</b>	HEK293T
<b>Expression cDNA Clone or AA Sequence:</b>	>RC203824 protein sequence <b>Red</b> =Cloning site <b>Green</b> =Tags(s)
	<p>MDEEYDVIVLGTGLTECILSGIMSVNGKKVLHMDRNPYYGGESSITPLEELYKRFQLLEGPPESMGRGR DWNVDLIPKFLMANGQLVKMLLYTEVTRYLDFKVVVEGSFVYKGGKIYKVPSTETEALASNLGMFKEKRRF RKFLVFNFDENDPKTFEGVDPQTSMRDVYRKFDLGQDVIDFTGHALALYRTDDYLDQPCLVNRK LYSESLARYGKSPYLYPLYGLGELPQGFARLSAIYGGTYMLNKPVDDIIMENKVVGVKSEGEVARCKQL ICDPSYIPDRVRKAGQVIRIICILSHPIKNTDANSCQIIIPQNQVNRKSDIYVCMISYAHNVAAQGKYI AIASTTVETTDPEKEVEPALELLEPIDQKFVAISDLYEPIDDGCESQVFCSCSYDATTHFETTENDIKDI YKRMAGTAFDFENMKRKQNDVFGAEQ</p> <p><b>TRTRPLEQKLISEEDLAANDILDYKDDDDKV</b></p>
<b>Tag:</b>	C-Myc/DDK
<b>Predicted MW:</b>	50.4 kDa
<b>Concentration:</b>	>0.05 µg/µL as determined by microplate BCA method
<b>Purity:</b>	> 80% as determined by SDS-PAGE and Coomassie blue staining
<b>Buffer:</b>	25 mM Tris-HCl, 100 mM glycine, pH 7.3, 10% glycerol
<b>Preparation:</b>	Recombinant protein was captured through anti-DDK affinity column followed by conventional chromatography steps.
<b>Note:</b>	For testing in cell culture applications, please filter before use. Note that you may experience some loss of protein during the filtration process.
<b>Storage:</b>	Store at -80°C.
<b>Stability:</b>	Stable for 12 months from the date of receipt of the product under proper storage and handling conditions. Avoid repeated freeze-thaw cycles.
<b>RefSeq:</b>	<u><a href="#">NP_001484</a></u>



[View online »](#)

Locus ID: 2664

UniProt ID: [P31150](#), [A0A0S2Z3X8](#)

RefSeq Size: 2505

Cytogenetics: Xq28

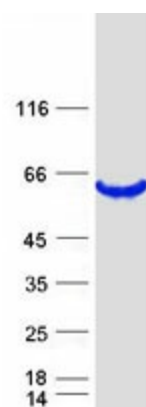
RefSeq ORF: 1341

Synonyms: 1A; GDIL; MRX41; MRX48; OPHN2; RABGD1A; RABGDIA; XAP-4

**Summary:** GDP dissociation inhibitors are proteins that regulate the GDP-GTP exchange reaction of members of the rab family, small GTP-binding proteins of the ras superfamily, that are involved in vesicular trafficking of molecules between cellular organelles. GDIs slow the rate of dissociation of GDP from rab proteins and release GDP from membrane-bound rabs. GDI1 is expressed primarily in neural and sensory tissues. Mutations in GDI1 have been linked to X-linked nonspecific cognitive disability. [provided by RefSeq, Jul 2008]

**Protein Families:** Druggable Genome

### Product images:



Coomassie blue staining of purified GDI1 protein (Cat# [TP303824]). The protein was produced from HEK293T cells transfected with GDI1 cDNA clone (Cat# [RC203824]) using MegaTran 2.0 (Cat# [TT210002]).