

Product datasheet for TP303821M

C1QB (NM_000491) Human Recombinant Protein

Product data:

Product Type:	Recombinant Proteins
Description:	Recombinant protein of human complement component 1, q subcomponent, B chain (C1QB), 100 µg
Species:	Human
Expression Host:	HEK293T
Expression cDNA Clone or AA Sequence:	>RC203821 protein sequence Red=Cloning site Green=Tags(s)

MMMKIPWGSIPVLMLLLLLGLIDISQAQLSCTGPPAIPGIPGIPGTPGPDGQPPTGPIKGEKGLPGLAGD
HGEFGKEKGDPIGNPGKVGPKGPMGPKGGPGAPGAPGPKGESGDYKATQKIAFSATRTINVPLRRDQTI
RFDHVITNMNNNYEPRSGKFTCKVPGLYFYTYHASSRGNLVCVNLMRGRERAQKVVTFCDYAYNTFQVTTG
GMVLKLEQGENVFLQATDKNSLLGMEGANSIFSGFLLFPDMEA

TRTRPLEQKLISEEDLAANDILDYKDDDDKV

Tag:	C-Myc/DDK
Predicted MW:	26.5 kDa
Concentration:	>0.05 µg/µL as determined by microplate BCA method
Purity:	> 80% as determined by SDS-PAGE and Coomassie blue staining
Buffer:	25 mM Tris-HCl, 100 mM glycine, pH 7.3, 10% glycerol
Preparation:	Recombinant protein was captured through anti-DDK affinity column followed by conventional chromatography steps.
Note:	For testing in cell culture applications, please filter before use. Note that you may experience some loss of protein during the filtration process.
Storage:	Store at -80°C.
Stability:	Stable for 12 months from the date of receipt of the product under proper storage and handling conditions. Avoid repeated freeze-thaw cycles.
RefSeq:	NP_000482
Locus ID:	713



[View online »](#)

UniProt ID: [P02746](#), [A0A024RAB9](#)

RefSeq Size: 1044

Cytogenetics: 1p36.12

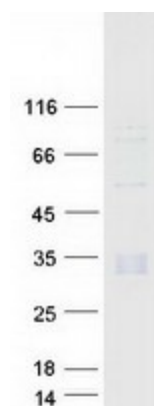
RefSeq ORF: 759

Summary: This gene encodes the B-chain polypeptide of serum complement subcomponent C1q, which associates with C1r and C1s to yield the first component of the serum complement system. C1q is composed of 18 polypeptide chains which include 6 A-chains, 6 B-chains, and 6 C-chains. Each chain contains an N-terminal collagen-like region and a C-terminal C1q globular domain. C1q deficiency is associated with lupus erythematosus and glomerulonephritis. [provided by RefSeq, Dec 2016]

Protein Families: Secreted Protein

Protein Pathways: Complement and coagulation cascades, Prion diseases, Systemic lupus erythematosus

Product images:



Coomassie blue staining of purified C1QB protein (Cat# [TP303821]). The protein was produced from HEK293T cells transfected with C1QB cDNA clone (Cat# [RC203821]) using MegaTran 2.0 (Cat# [TT210002]).