

Product datasheet for **TP303811M**

HLA DMB (HLA-DMB) (NM_002118) Human Recombinant Protein

Product data:

| | |
|-----------------------|--|
| Product Type: | Recombinant Proteins |
| Description: | Recombinant protein of human major histocompatibility complex, class II, DM beta (HLA-DMB), 100 µg |
| Species: | Human |
| Expression Host: | HEK293T |
| Expression cDNA | >RC203811 protein sequence |
| Clone or AA Sequence: | Red=Cloning site Green=Tags(s) |

MITFLPLLGLSLGCTGAGGFVAHVSTCLLDDAGTPKDFTYCISFNKDLLTCWDPEENKMAPCEFGVLN
SLANVLSQHNLNQKDTLMQRLRNGLQNCATHTQPFWGSLTNRTRPPSVQVAKTTPFNTREPVMLACYVWGF
YPAEVTITWRKNGKLVMPHSSAHKTAQPNGDWTYQTLSHLALTPSYGDTYTCVVEHIGAPEPILRDWTPG
LSPMQTLKVSVAVTLGLGLIIFSLGVISWRRAGHSSYTPLPGSNYSEGWHIS

TRTRPLEQKLISEEDLAANDILDYKDDDDKV

| | |
|----------------|--|
| Tag: | C-Myc/DDK |
| Predicted MW: | 27.1 kDa |
| Concentration: | >0.05 µg/µL as determined by microplate BCA method |
| Purity: | > 80% as determined by SDS-PAGE and Coomassie blue staining |
| Buffer: | 25 mM Tris-HCl, 100 mM glycine, pH 7.3, 10% glycerol |
| Preparation: | Recombinant protein was captured through anti-DDK affinity column followed by conventional chromatography steps. |
| Note: | For testing in cell culture applications, please filter before use. Note that you may experience some loss of protein during the filtration process. |
| Storage: | Store at -80°C. |
| Stability: | Stable for 12 months from the date of receipt of the product under proper storage and handling conditions. Avoid repeated freeze-thaw cycles. |
| RefSeq: | <u>NP_002109</u> |
| Locus ID: | 3109 |



[View online »](#)

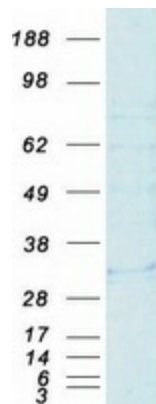
UniProt ID: [P28068](#), [A0A1V0E3P2](#)
RefSeq Size: 1412
Cytogenetics: 6p21.32
RefSeq ORF: 789
Synonyms: D6S221E; RING7

Summary: HLA-DMB belongs to the HLA class II beta chain paralogues. This class II molecule is a heterodimer consisting of an alpha (DMA) and a beta (DMB) chain, both anchored in the membrane. It is located in intracellular vesicles. DM plays a central role in the peptide loading of MHC class II molecules by helping to release the CLIP (class II-associated invariant chain peptide) molecule from the peptide binding site. Class II molecules are expressed in antigen presenting cells (APC: B lymphocytes, dendritic cells, macrophages). The beta chain is approximately 26-28 kDa and its gene contains 6 exons. Exon one encodes the leader peptide, exons 2 and 3 encode the two extracellular domains, exon 4 encodes the transmembrane domain and exon 5 encodes the cytoplasmic tail. [provided by RefSeq, Jul 2008]

Protein Families: Transmembrane

Protein Pathways: Allograft rejection, Antigen processing and presentation, Asthma, Autoimmune thyroid disease, Cell adhesion molecules (CAMs), Graft-versus-host disease, Systemic lupus erythematosus, Type I diabetes mellitus, Viral myocarditis

Product images:



Coomassie blue staining of purified HLA-DMB protein (Cat# [TP303811]). The protein was produced from HEK293T cells transfected with HLA-DMB cDNA clone (Cat# [RC203811]) using MegaTran 2.0 (Cat# [TT210002]).