

Product datasheet for TP303807M

CHI3L2 (NM_001025199) Human Recombinant Protein

Product data:

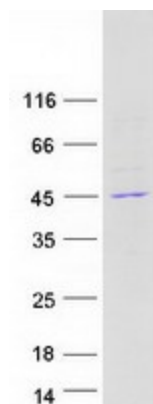
Product Type:	Recombinant Proteins
Description:	Recombinant protein of human chitinase 3-like 2 (CHI3L2), transcript variant 3, 100 µg
Species:	Human
Expression Host:	HEK293T
Expression cDNA Clone or AA Sequence:	>RC203807 protein sequence Red =Cloning site Green =Tags(s)
	<p>MGATTMDQKSLWAGVWVLLLLQGG SAYKLV CYFTNWSQDRQEPGKFTPENIDPFLCSHLIYSFASIENNK VIIKDKSEVMYQTINSLKTKNPKLKILLSIGGYLFGSKGFHPMVDSSTSRLFINSIILFLRNHNFDGL DVSWIYPDQKENTHFTVLIHELAEAFQKDFTKSTKERLLLTVGVSAGRQ MIDNSYQVEKLAKDLDFINLL SFD FHGSWEKPLITGHNSPLSKGWQDRGPSSYYNVEYAVGYWIHKMPSEKVVMIPTYGHSFTLASAET TVGAPASGPGAAGPITESSGFLAYYEICQFLKGAKITRLQDQQVPYAVKGNQWVG YDDVKSMETKVQFLK NLNLGGAMIWSIDMDDFTGKSCNQGPYPLVQAVKRSLGSL</p> <p>TRTRPLEQKLISEEDLAANDILDYKDDDDKV</p>
Tag:	C-Myc/DDK
Predicted MW:	34.5 kDa
Concentration:	>0.05 µg/µL as determined by microplate BCA method
Purity:	> 80% as determined by SDS-PAGE and Coomassie blue staining
Buffer:	25 mM Tris-HCl, 100 mM glycine, pH 7.3, 10% glycerol
Preparation:	Recombinant protein was captured through anti-DDK affinity column followed by conventional chromatography steps.
Note:	For testing in cell culture applications, please filter before use. Note that you may experience some loss of protein during the filtration process.
Storage:	Store at -80°C.
Stability:	Stable for 12 months from the date of receipt of the product under proper storage and handling conditions. Avoid repeated freeze-thaw cycles.
RefSeq:	NP_001020370
Locus ID:	1117



[View online »](#)

UniProt ID:	Q15782
RefSeq Size:	1516
Cytogenetics:	1p13.2
RefSeq ORF:	1173
Synonyms:	CHIL2; YKL-39; YKL39
Summary:	The protein encoded by this gene is similar to bacterial chitinases but lacks chitinase activity. The encoded protein is secreted and is involved in cartilage biogenesis. Several transcript variants encoding different isoforms have been found for this gene. [provided by RefSeq, Apr 2012]

Product images:



Coomassie blue staining of purified CHI3L2 protein (Cat# [TP303807]). The protein was produced from HEK293T cells transfected with CHI3L2 cDNA clone (Cat# [RC203807]) using MegaTran 2.0 (Cat# [TT210002]).