

## Product datasheet for **TP303805M**

### Papillary renal cell carcinoma (PRCC) (NM\_005973) Human Recombinant Protein

#### Product data:

**Product Type:** Recombinant Proteins

**Description:** Recombinant protein of human papillary renal cell carcinoma (translocation-associated) (PRCC), transcript variant 1, 100 µg

**Species:** Human

**Expression Host:** HEK293T

**Expression cDNA Clone or AA Sequence:** >RC203805 protein sequence  
**Red**=Cloning site **Green**=Tags(s)

MSLVAYASSDESEPDEAEPEPEEEEEAVAPTS GPALGGLFASLPAPKGPALLPPPPQMLAPAFPPPLLLPP  
PTGD PRLQPPPPPLPFGLGGFPPPPGVSPA EAAGVGEGLGLGLPSRGPGLNLPPPIGGAGPPLGLPKPKK  
RKEPVKIAAPELHKGSDSEEDPTKKKILQGSSEGTLSALLPQPKNLTVKETNRLLLP HAFSRKPSD  
GSPDTKPSRLASKTKTSSLAPVVGTTTTTPSPSAIKAAAKSAALQVTKQITQEEDDSDEEVAPENFFSLP  
EKAEPGVEPYPIPTVPEELPPGTEPEPAFQDDAANAPLEFKMAAGSSGAPWMPKPGDDYSYNQFSTY  
GDANAAGAYYQDYSSGGYPAQDPALVPTQEIAPDASFIDDEAFKRLQGKRNRGREEINFVEIKGDDQLS  
GAQQWMTKSLTEEKTMKFSFKKKEQPTGQQRRKHQITYLIHQAKERELELNKNTWSENKLSRRQTQAKYGF

**TRTRPLEQKLISEEDLAANDILDYKDDDDKV**

**Tag:** C-Myc/DDK

**Predicted MW:** 52.2 kDa

**Concentration:** >0.05 µg/µL as determined by microplate BCA method

**Purity:** > 80% as determined by SDS-PAGE and Coomassie blue staining

**Buffer:** 25 mM Tris-HCl, 100 mM glycine, pH 7.3, 10% glycerol

**Preparation:** Recombinant protein was captured through anti-DDK affinity column followed by conventional chromatography steps.

**Note:** For testing in cell culture applications, please filter before use. Note that you may experience some loss of protein during the filtration process.

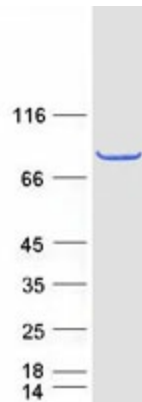
**Storage:** Store at -80°C.



[View online »](#)

<b>Stability:</b>	Stable for 12 months from the date of receipt of the product under proper storage and handling conditions. Avoid repeated freeze-thaw cycles.
<b>RefSeq:</b>	<a href="#">NP_005964</a>
<b>Locus ID:</b>	5546
<b>UniProt ID:</b>	<a href="#">Q92733</a> , <a href="#">A0A0S2Z456</a> , <a href="#">Q96FT4</a>
<b>RefSeq Size:</b>	2142
<b>Cytogenetics:</b>	1q23.1
<b>RefSeq ORF:</b>	1473
<b>Synonyms:</b>	RCCP1; TPRC
<b>Summary:</b>	This gene encodes a protein that may play a role in pre-mRNA splicing. Chromosomal translocations (X;1)(p11;q21) that result in fusion of this gene to TFE3 (GeneID 7030) have been associated with papillary renal cell carcinoma. A PRCC-TFE3 fusion protein is expressed in affected carcinomas and is likely associated with altered gene transactivation. This fusion protein has also been associated with disruption of the cell cycle.[provided by RefSeq, Aug 2010]
<b>Protein Families:</b>	Druggable Genome

### Product images:



Coomassie blue staining of purified PRCC protein (Cat# [TP303805]). The protein was produced from HEK293T cells transfected with PRCC cDNA clone (Cat# [RC203805]) using MegaTran 2.0 (Cat# [TT210002]).