

Product datasheet for TP303805L

Papillary renal cell carcinoma (PRCC) (NM_005973) Human Recombinant Protein

Product data:

Product Type:	Recombinant Proteins
Description:	Recombinant protein of human papillary renal cell carcinoma (translocation-associated) (PRCC), transcript variant 1, 1 mg
Species:	Human
Expression Host:	HEK293T
Expression cDNA Clone or AA Sequence:	>RC203805 protein sequence Red=Cloning site Green=Tags(s)

MSLVAYASSDESEPDEAEPEPEEEEEAVAPTS GPALGGLFASLPAPKGPALLPPPPQMLAPAFPPPLLLPP
PTGDPRLQPPPLPFGLGGFPPPPGVSPA EAAGVGEGLGLGLPSRGPGLNLPPPIGGAGPPLGLPKPKK
RKEPVKIAAPELHKGDS DSEEDPTKKK TILQGSSEGTGLSALLPQPKNLTVKETNRLLLP HAFSRKPSD
GSPDTKPSRLASKTKTSSLAPVVGTTTTTPSPSAIKAAAKSAALQVTKQITQEEDDSDEEVAPENFFSLP
EKAEPGVEPYPIPTVPEELPPGTEPEPAFQDDAANAPLEFKMAAGSSGAPWMPKPGDDYSYNQFSTY
GDANAAGAYYQDYSSGGYPAQDPALVPTQEIAPDASFIDDEAFKRLQGKRNRGREEINFVEIKGDDQLS
GAQQWMTKSLTEEKTMKSFSSKKKGEQPTGQQRRKHQITYLIHQAKERELELKN TWSENKLSRRQTQAKYGF

TRTRPLEQKLISEEDLAANDILDYKDDDDKV

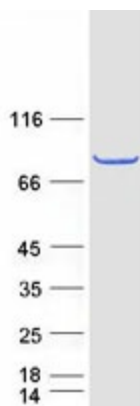
Tag:	C-Myc/DDK
Predicted MW:	52.2 kDa
Concentration:	>0.05 µg/µL as determined by microplate BCA method
Purity:	> 80% as determined by SDS-PAGE and Coomassie blue staining
Buffer:	25 mM Tris-HCl, 100 mM glycine, pH 7.3, 10% glycerol
Preparation:	Recombinant protein was captured through anti-DDK affinity column followed by conventional chromatography steps.
Note:	For testing in cell culture applications, please filter before use. Note that you may experience some loss of protein during the filtration process.
Storage:	Store at -80°C.



[View online »](#)

Stability:	Stable for 12 months from the date of receipt of the product under proper storage and handling conditions. Avoid repeated freeze-thaw cycles.
RefSeq:	NP_005964
Locus ID:	5546
UniProt ID:	Q92733 , A0A0S2Z456 , Q96FT4
RefSeq Size:	2142
Cytogenetics:	1q23.1
RefSeq ORF:	1473
Synonyms:	RCCP1; TPRC
Summary:	This gene encodes a protein that may play a role in pre-mRNA splicing. Chromosomal translocations (X;1)(p11;q21) that result in fusion of this gene to TFE3 (GeneID 7030) have been associated with papillary renal cell carcinoma. A PRCC-TFE3 fusion protein is expressed in affected carcinomas and is likely associated with altered gene transactivation. This fusion protein has also been associated with disruption of the cell cycle.[provided by RefSeq, Aug 2010]
Protein Families:	Druggable Genome

Product images:



Coomassie blue staining of purified PRCC protein (Cat# [TP303805]). The protein was produced from HEK293T cells transfected with PRCC cDNA clone (Cat# [RC203805]) using MegaTran 2.0 (Cat# [TT210002]).