

Product datasheet for **TP303798L**

Dystrobrevin beta (DTNB) (NM_183361) Human Recombinant Protein

Product data:

Product Type: Recombinant Proteins

Description: Recombinant protein of human dystrobrevin, beta (DTNB), transcript variant 5, 1 mg

Species: Human

Expression Host: HEK293T

Expression cDNA >RC203798 protein sequence

Clone or AA **Red**=Cloning site **Green**=Tags(s)

Sequence:

MIEESGNKRKTMAEKRQLFIEMRAQNFVIRLSTYRTACKLRFVQKRCNLHLVDIWNMIEAFRDNGLNTL
DHTTEISVSRLETVISSIIYQLNKRLPSTHQISVEQISLLLLNFMIAAYDSEGRGKLVFVSKAMLATMC
GGKMLDKLRYVFSQMSDSNGLMIFSKFDQFLKEVLKLPYAVFEGPSFGYTEHSVRTCFPQQRKIMLNMFL
DTMMADPPPQCLVWLPLMHLAHLAVENVFHPVECSYCRCESMMGFRYRCQQCHNYQLCQNCFWRGHAGGPH
SNQHQMKEHSSWKSPAKKLSHAISKSLGCVPTREPPHPVFPEQPEKPLDLAHIVPPRPLTNMNDTMVSHM
SSGVPTPTKSVLDSPSRLDEEHRLIARYAARLAAEAGNVTRPPTDLSFNFDANKQQRQLIAELENKNREI
LQEIQLRLEHEQASQPTPEKAQQNPTLLAELRLLRQRKDELEQRMSALQESRRELMVQLEELMKLLKAQ
ATGSPHTSPTHGGGRPMPMPVRSTSAGSTPTHCPQDLSLGGVGGDVQEAFQAEEGAEEMKQNGKDRG

TRTRPLEQKLISEEDLAANDILDYKDDDDKV

Tag: C-Myc/DDK

Predicted MW: 63.6 kDa

Concentration: >0.05 µg/µL as determined by microplate BCA method

Purity: > 80% as determined by SDS-PAGE and Coomassie blue staining

Buffer: 25 mM Tris-HCl, 100 mM glycine, pH 7.3, 10% glycerol

Preparation: Recombinant protein was captured through anti-DDK affinity column followed by conventional chromatography steps.

Note: For testing in cell culture applications, please filter before use. Note that you may experience some loss of protein during the filtration process.

Storage: Store at -80°C.

Stability: Stable for 12 months from the date of receipt of the product under proper storage and handling conditions. Avoid repeated freeze-thaw cycles.



[View online >](#)

RefSeq: [NP_899205](#)

Locus ID: 1838

UniProt ID: [O60941](#)

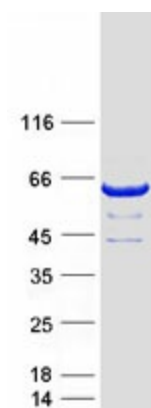
RefSeq Size: 2328

Cytogenetics: 2p23.3

RefSeq ORF: 1680

Summary: This gene encodes dystrobrevin beta, a component of the dystrophin-associated protein complex (DPC). The DPC consists of dystrophin and several integral and peripheral membrane proteins, including dystroglycans, sarcoglycans, syntrophins and dystrobrevin alpha and beta. The DPC localizes to the sarcolemma and its disruption is associated with various forms of muscular dystrophy. Dystrobrevin beta is thought to interact with syntrophin and the DP71 short form of dystrophin. [provided by RefSeq, Mar 2016]

Product images:



Coomassie blue staining of purified DTNB protein (Cat# [TP303798]). The protein was produced from HEK293T cells transfected with DTNB cDNA clone (Cat# [RC203798]) using MegaTran 2.0 (Cat# [TT210002]).