

## Product datasheet for TP303791M

### SMNDC1 (NM\_005871) Human Recombinant Protein

#### Product data:

Product Type:	Recombinant Proteins
Description:	Recombinant protein of human survival motor neuron domain containing 1 (SMNDC1), 100 µg
Species:	Human
Expression Host:	HEK293T
Expression cDNA Clone or AA Sequence:	>RC203791 protein sequence <b>Red</b> =Cloning site <b>Green</b> =Tags(s)
	<p>MSEDLAKQLASYKAQLQQVEAALSGNGENEDLLKLLKDLQEVIELTKDLLSTQPSETLASSDSFASTQPT HSWKVGDKCMVWSEGDQCYEAEIEEIDEENGTAITFAGYGNAEVTPLLNLKPVVEGRKAKEDSGNKPM SKKEMIAQQREYKKKKALKKAQRIKELEQEREDQVKWQQFNNRAYSKNKKGQVKRSIFASPESVTGKVG VGTCGIADKPMTQYQDTSKYNVRHLMPQ</p> <p><b>TRTRPLEQKLISEEDLAANDILDYKDDDDKV</b></p>
Tag:	C-Myc/DDK
Predicted MW:	26.5 kDa
Concentration:	>0.05 µg/µL as determined by microplate BCA method
Purity:	> 80% as determined by SDS-PAGE and Coomassie blue staining
Buffer:	25 mM Tris-HCl, 100 mM glycine, pH 7.3, 10% glycerol
Preparation:	Recombinant protein was captured through anti-DDK affinity column followed by conventional chromatography steps.
Note:	For testing in cell culture applications, please filter before use. Note that you may experience some loss of protein during the filtration process.
Storage:	Store at -80°C.
Stability:	Stable for 12 months from the date of receipt of the product under proper storage and handling conditions. Avoid repeated freeze-thaw cycles.
RefSeq:	<a href="#">NP_005862</a>
Locus ID:	10285



[View online »](#)

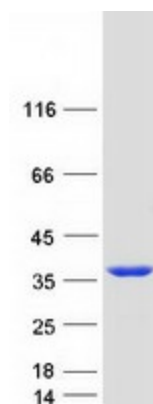
UniProt ID: [O75940](#)  
RefSeq Size: 2043  
Cytogenetics: 10q25.2  
RefSeq ORF: 714  
Synonyms: SMNR; SPF30; TDRD16C

**Summary:** This gene is a paralog of SMN1 gene, which encodes the survival motor neuron protein, mutations in which are cause of autosomal recessive proximal spinal muscular atrophy. The protein encoded by this gene is a nuclear protein that has been identified as a constituent of the spliceosome complex. This gene is differentially expressed, with abundant levels in skeletal muscle, and may share similar cellular function as the SMN1 gene. [provided by RefSeq, Jul 2008]

**Protein Families:** Stem cell - Pluripotency

**Protein Pathways:** Spliceosome

### Product images:



Coomassie blue staining of purified SMNDC1 protein (Cat# [TP303791]). The protein was produced from HEK293T cells transfected with SMNDC1 cDNA clone (Cat# [RC203791]) using MegaTran 2.0 (Cat# [TT210002]).