

## Product datasheet for TP303774L

### SMRC2 (SMARCC2) (NM\_139067) Human Recombinant Protein

#### Product data:

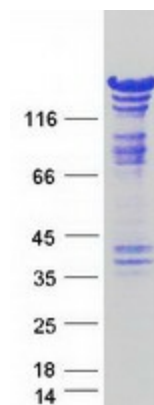
<b>Product Type:</b>	Recombinant Proteins
<b>Description:</b>	Recombinant protein of human SWI/SNF related, matrix associated, actin dependent regulator of chromatin, subfamily c, member 2 (SMARCC2), transcript variant 2, 1 mg
<b>Species:</b>	Human
<b>Expression Host:</b>	HEK293T
<b>Expression cDNA Clone or AA Sequence:</b>	>RC203774 protein sequence <b>Red</b> =Cloning site <b>Green</b> =Tags(s)
	<p>MAVRKKDGGPNVKYEEADTVTQFDNVRLWLGKNYKYYIQAEPPTNKSLSLWVQLLQFQEEVFGKHVSN          APLTKLPIKCFDFKAGGSLCHILAAAYKFKSDQGWRRYDFQNP SRMDRNVEMFMTIEKSLVQNNCLSRP          NIFLCPEIEPKLLGKLDIIKRHQGTVTEDKNNASHVVYPVPGNLEEEEWVRPVMKRDKQVLLHWGYYPD          SYDTWIPASEIEASVEDAPTPEKPRKVHAKWILD TDTFNEWMNEEDYEVNDDKNPVSRRKKISAKTLTDE          VNSPDSRRRDKKGGNYKKRKRSPSPSPTPEAKKKNAKKG PSTPYTKSKRGHREEEQEDLT KDMDPEPSPV          NVEEVLTKVTNTKKDSEAPVKGGTMTDLDEQEDES METTGKDEDENSTGNKGEQTKNPD LHEDNVTEQ          THHIIIPSYAAWFDYNSVHAIERRALPEFFNGKNKSKTPEIYLAYRNF MIDTYRLNPQEYLTSTACRNL          AGDVCAIMRVHAFLEQWGLINYQVDAESRPTPMGPPPTSHFV LADTPSGLVPLQKTPQGRQVDADTKA          GRKGKELDDLVPETAKGKPELQTSASQQMLNFPDKGKEKPTDMQN FGLRTDMYTKKNVPSKSKAAASATR          EWTEQETLLLLLEALEMYKDDWNKVSEHVGSRTQDECILHFLRLPIEDPYLEDSEASLGPLAYQPIPFQS          GNPVMSTVAFLASVVDPRVASAAKSALEEF SKMKEEVPTALVEAHVRKVEEA AKVTGKADPAFGLESSG          IAGTTSDEPERIEESGNDEARVEGQATDEKKEPK EPREGGGAIEEEAKEKTSEAPKKDEEKGEKDSEKE          SEKSDGDPVDPEKEKEPKEGQEEVLKEVVESEGERKTKVERDIGE GNLSTAAAAALAAA AVKAKHFAAV          EERKIKSLVALLVETQMKKLEIKLRHFEELETIMDREREAL EYQRQQLADRQAFHMEQLKYAEMRARQQ          HFQQMHQQQQPPALPPGSQPIPPPTGAAGPPAVHGLAVAPASVVPAPAGSGAPPGLPSEQIGQAGST          AGPQQQPAGAPQPGAVPPGVPPGPHGSPFPNQTPP SMMPGAVPGSGHPGVADPGTLPDPDPTAPSP          GTVTPVPPPQ</p> <p><b>TRTRPLEQKLISEEDLAANDILDYKDDDDKV</b></p>
<b>Tag:</b>	C-Myc/DDK
<b>Predicted MW:</b>	124.7 kDa
<b>Concentration:</b>	>0.05 µg/µL as determined by microplate BCA method
<b>Purity:</b>	> 80% as determined by SDS-PAGE and Coomassie blue staining



[View online »](#)

<b>Buffer:</b>	25 mM Tris-HCl, 100 mM glycine, pH 7.3, 10% glycerol
<b>Preparation:</b>	Recombinant protein was captured through anti-DDK affinity column followed by conventional chromatography steps.
<b>Note:</b>	For testing in cell culture applications, please filter before use. Note that you may experience some loss of protein during the filtration process.
<b>Storage:</b>	Store at -80°C.
<b>Stability:</b>	Stable for 12 months from the date of receipt of the product under proper storage and handling conditions. Avoid repeated freeze-thaw cycles.
<b>RefSeq:</b>	<a href="#">NP_620706</a>
<b>Locus ID:</b>	6601
<b>UniProt ID:</b>	<a href="#">Q8TAQ2</a>
<b>RefSeq Size:</b>	5336
<b>Cytogenetics:</b>	12q13.2
<b>RefSeq ORF:</b>	3390
<b>Synonyms:</b>	BAF170; CRACC2; CSS8; Rsc8
<b>Summary:</b>	The protein encoded by this gene is a member of the SWI/SNF family of proteins, whose members display helicase and ATPase activities and which are thought to regulate transcription of certain genes by altering the chromatin structure around those genes. The encoded protein is part of the large ATP-dependent chromatin remodeling complex SNF/SWI and contains a predicted leucine zipper motif typical of many transcription factors. Alternatively spliced transcript variants encoding different isoforms have been found for this gene. [provided by RefSeq, Jul 2008]
<b>Protein Families:</b>	Transcription Factors

### Product images:



Coomassie blue staining of purified SMARCC2 protein (Cat# [TP303774]). The protein was produced from HEK293T cells transfected with SMARCC2 cDNA clone (Cat# [RC203774]) using MegaTran 2.0 (Cat# [TT210002]).