

## Product datasheet for TP303767L

### SERPING1 (NM\_000062) Human Recombinant Protein

#### Product data:

Product Type:	Recombinant Proteins
Description:	Recombinant protein of human serpin peptidase inhibitor, clade G (C1 inhibitor), member 1 (SERPING1), transcript variant 1, 1 mg
Species:	Human
Expression Host:	HEK293T
Expression cDNA Clone or AA Sequence:	>RC203767 protein sequence Red=Cloning site Green=Tags(s)

MASRLTLLTLLLLLAGDRASSNPATSSSSQDPESLQDRGEGKVATTVISKMLFVEPILEVSSLPTTNS  
TTNSATKITANTTDEPTTQPTTEPTTQPTIQPTQPTTQLPTDSPTQPTTGSFCPGPVTLCSDLSEHSTEA  
VLGDALVDFSLKLYHAFSAMKKVETNMAFSPFSIASLLTQVLLGAGENTKTNLESILSYPKDFTCVHQAL  
KGFTTKGVTSVSQIFHSPDLAIRDTFVNASRTLYSSSPRVLSNNSDANLELINTWVAKNTNKKISRLDLS  
LPSDTRLVLLNAIYLSAKWKTFDPKKTRMEPFHFKNSVIKVPMMNSKKYPVAHFIDQTLKAKVGLQLS  
HNLSLVILVPQNLKHRLEDMEQALSPSVFKAIMEKLEMSKFQPTLLLPRIKVTTSDMLSIMKLEFFD  
FSYDLNLCGLTEDPDLQVSAMQHQTVLELTETGVEAAAASAI SVARTLLVFEVQQPFLFMLWDQQHKFPV  
FMGRVYDPRA

TRTRPLEQKLISEEDLAANDILDYKDDDDKV

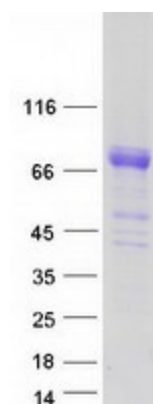
Tag:	C-Myc/DDK
Predicted MW:	52.8 kDa
Concentration:	>0.05 µg/µL as determined by microplate BCA method
Purity:	> 80% as determined by SDS-PAGE and Coomassie blue staining
Buffer:	25 mM Tris-HCl, 100 mM glycine, pH 7.3, 10% glycerol
Preparation:	Recombinant protein was captured through anti-DDK affinity column followed by conventional chromatography steps.
Note:	For testing in cell culture applications, please filter before use. Note that you may experience some loss of protein during the filtration process.
Storage:	Store at -80°C.



[View online »](#)

<b>Stability:</b>	Stable for 12 months from the date of receipt of the product under proper storage and handling conditions. Avoid repeated freeze-thaw cycles.
<b>RefSeq:</b>	<a href="#">NP_000053</a>
<b>Locus ID:</b>	710
<b>UniProt ID:</b>	<a href="#">P05155</a> , <a href="#">E9KL26</a>
<b>RefSeq Size:</b>	1984
<b>Cytogenetics:</b>	11q12.1
<b>RefSeq ORF:</b>	1500
<b>Synonyms:</b>	C1IN; C1INH; C1NH; HAE1; HAE2
<b>Summary:</b>	This gene encodes a highly glycosylated plasma protein involved in the regulation of the complement cascade. Its encoded protein, C1 inhibitor, inhibits activated C1r and C1s of the first complement component and thus regulates complement activation. It is synthesized in the liver, and its deficiency is associated with hereditary angioneurotic oedema (HANE). Alternative splicing results in multiple transcript variants encoding the same isoform. [provided by RefSeq, May 2020]
<b>Protein Families:</b>	Druggable Genome, Secreted Protein
<b>Protein Pathways:</b>	Complement and coagulation cascades

### Product images:



Coomassie blue staining of purified SERPING1 protein (Cat# [TP303767]). The protein was produced from HEK293T cells transfected with SERPING1 cDNA clone (Cat# [RC203767]) using MegaTran 2.0 (Cat# [TT210002]).