

Product datasheet for **TP303766L**

Lipoprotein lipase (LPL) (NM_000237) Human Recombinant Protein

Product data:

Product Type:	Recombinant Proteins
Description:	Recombinant protein of human lipoprotein lipase (LPL), 1 mg
Species:	Human
Expression Host:	HEK293T
Expression cDNA Clone or AA Sequence:	>RC203766 representing NM_000237 Red =Cloning site Green =Tags(s)

MESKALLVLTAVWLQSLTASRGGVAAADQRRDFIDIESKFALRTPEDTAEDTCHLIPGVAESVATCHFN
HSSKTFMVIHGWTVTGMYESWPKLVAALYKREPDSNVIVVDWLSRAQEHYPVSAGYTKLVGQDVARFIN
WMEEEFNYPLDNDVHLLGYSLGAAHAAGIAGSLTNKKVNRITGLDPAGPNFEYAEAPSRLSPDDADFVDVLH
TFTRGSPGRSIGIQKPVGHVDIYPNGGTFQPGCNIGEAIRVIAERGLGDVDQLVKCSHERSIHLFIDSL
NEENPSKAYRCSKEAFEKGLCLSCRKNRCNNLGYEINKVRAKRSSKMYLKTRSQMPYKVFHYQVKIHFS
GTESEHTNQAFEISLYGTVAESENIPFTLPEVSTNKTYSFLLIYTEVDIGELMLKWKSDSYFSWSDW
WSSPGFAIQKIRVKAGETQKKVIFCSREKVSHLQKQKAPAVFKCHDKSLNKKSG

TRTRPLEQKLISEEDLAANDILDYKDDDDKV

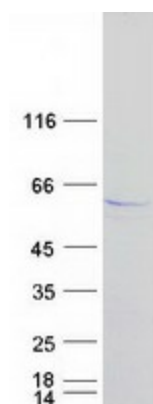
Tag:	C-Myc/DDK
Predicted MW:	50.3 kDa
Concentration:	>0.1 µg/µL as determined by microplate BCA method
Purity:	> 80% as determined by SDS-PAGE and Coomassie blue staining
Buffer:	25 mM Tris-HCl, 100 mM glycine, pH 7.3, 10% glycerol
Preparation:	Recombinant protein was captured through anti-DDK affinity column followed by conventional chromatography steps.
Note:	For testing in cell culture applications, please filter before use. Note that you may experience some loss of protein during the filtration process.
Storage:	Store at -80°C.
Stability:	Stable for 12 months from the date of receipt of the product under proper storage and handling conditions. Avoid repeated freeze-thaw cycles.
RefSeq:	<u>NP_000228</u>



[View online »](#)

Locus ID:	4023
UniProt ID:	P06858 , A0A1B1RVA9
RefSeq Size:	3747
Cytogenetics:	8p21.3
RefSeq ORF:	1425
Synonyms:	HDLCQ11; LIPD
Summary:	LPL encodes lipoprotein lipase, which is expressed in heart, muscle, and adipose tissue. LPL functions as a homodimer, and has the dual functions of triglyceride hydrolase and ligand/bridging factor for receptor-mediated lipoprotein uptake. Severe mutations that cause LPL deficiency result in type I hyperlipoproteinemia, while less extreme mutations in LPL are linked to many disorders of lipoprotein metabolism. [provided by RefSeq, Jul 2008]
Protein Families:	Druggable Genome
Protein Pathways:	Alzheimer's disease, Glycerolipid metabolism, PPAR signaling pathway

Product images:



Coomassie blue staining of purified LPL protein (Cat# [TP303766]). The protein was produced from HEK293T cells transfected with LPL cDNA clone (Cat# [RC203766]) using MegaTran 2.0 (Cat# [TT210002]).