

## Product datasheet for **TP303761M**

### VPAC2 (VIPR2) (NM\_003382) Human Recombinant Protein

#### Product data:

**Product Type:** Recombinant Proteins

**Description:** Recombinant protein of human vasoactive intestinal peptide receptor 2 (VIPR2), 100 µg

**Species:** Human

**Expression Host:** HEK293T

**Expression cDNA Clone or AA Sequence:** >RC203761 protein sequence  
**Red**=Cloning site **Green**=Tags(s)

MRTLLPPALLTCWLLAPVNSIHPECRFHLEIQEETKCAELLRSQTEKHKACSGVWDNITCWRPANVGET  
VTVPCPKVFSNFYSKAGNISKNCTSDGWSETFPDFVDACGYSDPEDESKITFYILVKAIYTLGYSVSLMS  
LATGSII LCLFRKLHCTRNYIHLNLFSLFILRAISVLVKDDVLYSSSGTLHCPDQPSSWVGCKLSLVFLQ  
YCI MANFFWLLVEGLYLHTLLVAMLPPRRCF LAYLLIGWGLPTVCIGAWTAARLYLEDTG CWDTNDHSVP  
WWWIRIPILISII VNFVLFISIIRILLQKLTSPDVGGNDQSQYKRLAKSTLLLIPLFGVHYMVFVFPIS  
ISSKYQILFELCLGSFQGLWAVLYCFLNSEVQCELKRKWR SRCPTPSASRDYRVC GSSFSRNGSEGALQ  
FHRGSRAQSFLQTETSVI

**TRTRPLEQKLISEEDLAANDILDYKDDDDKV**

**Tag:** C-Myc/DDK

**Predicted MW:** 49.3 kDa

**Concentration:** >0.05 µg/µL as determined by microplate BCA method

**Purity:** > 80% as determined by SDS-PAGE and Coomassie blue staining

**Buffer:** 25 mM Tris-HCl, 100 mM glycine, pH 7.3, 10% glycerol

**Preparation:** Recombinant protein was captured through anti-DDK affinity column followed by conventional chromatography steps.

**Note:** For testing in cell culture applications, please filter before use. Note that you may experience some loss of protein during the filtration process.

**Storage:** Store at -80°C.

**Stability:** Stable for 12 months from the date of receipt of the product under proper storage and handling conditions. Avoid repeated freeze-thaw cycles.

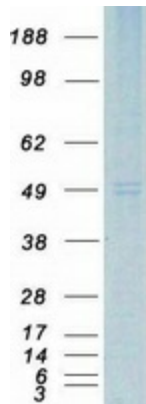
**RefSeq:** [NP\\_003373](#)



[View online »](#)

Locus ID:	7434
UniProt ID:	<a href="#">P41587</a> , <a href="#">X5D7Q6</a>
RefSeq Size:	3961
Cytogenetics:	7q36.3
RefSeq ORF:	1314
Synonyms:	C16DUPq36.3; DUP7q36.3; PACAP-R-3; PACAP-R3; VIP-R-2; VPAC2; VPAC2R; VPCAP2R
Summary:	This gene encodes a receptor for vasoactive intestinal peptide, a small neuropeptide. Vasoactive intestinal peptide is involved in smooth muscle relaxation, exocrine and endocrine secretion, and water and ion flux in lung and intestinal epithelia. Its actions are effected through integral membrane receptors associated with a guanine nucleotide binding protein which activates adenylate cyclase. [provided by RefSeq, Aug 2011]
Protein Families:	Druggable Genome, GPCR, Transmembrane
Protein Pathways:	Neuroactive ligand-receptor interaction

### Product images:



Coomassie blue staining of purified VIPR2 protein (Cat# [TP303761]). The protein was produced from HEK293T cells transfected with VIPR2 cDNA clone (Cat# [RC203761]) using MegaTran 2.0 (Cat# [TT210002]).