

## Product datasheet for TP303756L

### Alanine Transaminase (GPT) (NM\_005309) Human Recombinant Protein

#### Product data:

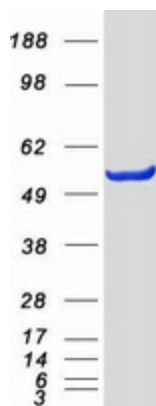
Product Type:	Recombinant Proteins
Description:	Recombinant protein of human glutamic-pyruvate transaminase (alanine aminotransferase) (GPT), 1 mg
Species:	Human
Expression Host:	HEK293T
Expression cDNA Clone or AA Sequence:	>RC203756 protein sequence <b>Red</b> =Cloning site <b>Green</b> =Tags(s)
	<p>MASSTGDRSQAVRHGLRAKVLTLDGMINPRVRRVEYAVRGPVQRALELEQELRQGVKKPFTEVIRANIGD  AQAMGQRPITFLRQVLALCVNPDLLSSPNFPDDAKKRAERILQACGGHSLGAYSVSSGIQLIREDVARYI  ERRDGGIPADPNNVFLSTGASDAIVTLKLLVAGEGHRTRTGVLPIPIQYPLYSATLAELGAVQVDYYLDE  ERAWALDVAELHRALGQARDHCRPRALCVINPGNPTGQVQTRECI EAVIRFAFEERLFLLADEVYQDNVY  AAGSQFH SFKKVLMEMGPPYAGQQELASFHSTSKGYMGECGFRGGYVEVNM DAAVQQMLKLMSVRLCP  PVPGQALLDLVVSPPAPTDPSFAQFQAEKQAVLAELA AAKAKLTEQVFNEAPGISCNPVQGAMYSFPRVQL  PPRAVERA QELGLAPDMFFCLRLLEETGICVVP GSGFGQREGTYHFRMTILPPEKLRLLLEKLSRFHAK  FTLEYS</p> <p><b>TRTRPLEQKLISEEDLAANDILDYKDDDDKV</b></p>
Tag:	C-Myc/DDK
Predicted MW:	54.5 kDa
Concentration:	>0.05 µg/µL as determined by microplate BCA method
Purity:	> 80% as determined by SDS-PAGE and Coomassie blue staining
Buffer:	25 mM Tris-HCl, 100 mM glycine, pH 7.3, 10% glycerol
Preparation:	Recombinant protein was captured through anti-DDK affinity column followed by conventional chromatography steps.
Note:	For testing in cell culture applications, please filter before use. Note that you may experience some loss of protein during the filtration process.
Storage:	Store at -80°C.



[View online »](#)

<b>Stability:</b>	Stable for 12 months from the date of receipt of the product under proper storage and handling conditions. Avoid repeated freeze-thaw cycles.
<b>RefSeq:</b>	<a href="#">NP_005300</a>
<b>Locus ID:</b>	2875
<b>UniProt ID:</b>	<a href="#">P24298</a>
<b>RefSeq Size:</b>	1896
<b>Cytogenetics:</b>	8q24.3
<b>RefSeq ORF:</b>	1488
<b>Synonyms:</b>	AAT1; ALT1; GPT1
<b>Summary:</b>	This gene encodes cytosolic alanine aminotransaminase 1 (ALT1); also known as glutamate-pyruvate transaminase 1. This enzyme catalyzes the reversible transamination between alanine and 2-oxoglutarate to generate pyruvate and glutamate and, therefore, plays a key role in the intermediary metabolism of glucose and amino acids. Serum activity levels of this enzyme are routinely used as a biomarker of liver injury caused by drug toxicity, infection, alcohol, and steatosis. A related gene on chromosome 16 encodes a putative mitochondrial alanine aminotransaminase.[provided by RefSeq, Nov 2009]
<b>Protein Families:</b>	Druggable Genome
<b>Protein Pathways:</b>	Alanine, aspartate and glutamate metabolism, Metabolic pathways

### Product images:



Coomassie blue staining of purified GPT protein (Cat# [TP303756]). The protein was produced from HEK293T cells transfected with GPT cDNA clone (Cat# [RC203756]) using MegaTran 2.0 (Cat# [TT210002]).