

Product datasheet for **TP303745**

BTN2A1 (NM_078476) Human Recombinant Protein

Product data:

Product Type:	Recombinant Proteins
Description:	Recombinant protein of human butyrophilin, subfamily 2, member A1 (BTN2A1), transcript variant 2, 20 µg
Species:	Human
Expression Host:	HEK293T
Expression cDNA Clone or AA Sequence:	>RC203745 protein sequence Red =Cloning site Green =Tags(s)

MESAAALHFSRPASLLLLLLSLCALVSAQFIVVGPTDPILATVGENTTLRCHLSPEKNAEDMEVRWFRSQ
FSPAVFVYKGGREERTEEQMEEYRGRRTTFVSKDISRGSVALVIHNITAQENGTYRCYFQEGRSYDEAILHL
VVAGLGSKPLISMRGHEDGGIRLECISRGWYPKPLTVWRDPYGGVAPALKEVSMPPADGLFMVTTAVIIR
DKSVRNMSCSINNTLLGQKKESVIFIPESFMPSPCAVALPIIVVILMIPIAVCIYWINKLQKEKKILS
GEKEFERETREIALKELEKERVQKEELQVKEKLQEELRWRRTFLHAELQFFSN

TRTRPLEQKLISEEDLAANDILDYKDDDDKV

Tag:	C-Myc/DDK
Predicted MW:	34.9 kDa
Concentration:	>0.05 µg/µL as determined by microplate BCA method
Purity:	> 80% as determined by SDS-PAGE and Coomassie blue staining
Buffer:	25 mM Tris-HCl, 100 mM glycine, pH 7.3, 10% glycerol
Preparation:	Recombinant protein was captured through anti-DDK affinity column followed by conventional chromatography steps.
Note:	For testing in cell culture applications, please filter before use. Note that you may experience some loss of protein during the filtration process.
Storage:	Store at -80°C.
Stability:	Stable for 12 months from the date of receipt of the product under proper storage and handling conditions. Avoid repeated freeze-thaw cycles.
RefSeq:	NP_510961
Locus ID:	11120



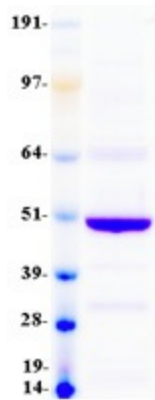
[View online »](#)

UniProt ID: [Q7KYRZ](#)
RefSeq Size: 3186
Cytogenetics: 6p22.2
RefSeq ORF: 1002
Synonyms: BK14H9.1; BT2.1; BTF1; BTN2.1; DJ3E1.1

Summary: This gene encodes a member of the immunoglobulin superfamily. The gene is located in a cluster of butyrophilin-like genes in the juxta-telomeric region of the major histocompatibility complex on chromosome 6. A pseudogene of this gene has been identified in this cluster. The encoded protein is an integral plasma membrane protein involved in lipid, fatty-acid, and sterol metabolism. Alterations in this gene may be associated with several disease states including metabolic syndrome. Multiple alternatively spliced transcript variants encoding different isoforms have been found for this gene. [provided by RefSeq, Jul 2013]

Protein Families: Druggable Genome, Transmembrane

Product images:



Coomassie blue staining of purified BTN2A1 protein (Cat# TP303745). The protein was produced from HEK293T cells transfected with BTN2A1 cDNA clone (Cat# [RC203745]) using MegaTran 2.0 (Cat# [TT210002]).