

## Product datasheet for TP303741L

### LTA (NM\_000595) Human Recombinant Protein

#### Product data:

Product Type:	Recombinant Proteins
Description:	Recombinant protein of human lymphotoxin alpha (TNF superfamily, member 1) (LTA), 1 mg
Species:	Human
Expression Host:	HEK293T
Expression cDNA Clone or AA Sequence:	>RC203741 protein sequence Red=Cloning site Green=Tags(s)

MTPPERLFLPRVRGTTLHLLLLGLLLVLPGAQGLPGVGLTPSAAQATARQHPKMHLAHSTLKPA AHLIGD  
PSKQNSLLWRANTDRAFLQDGFSLSNNSLLVPTSGIYFVYSQVWFSGKAYSPKATSSPLYLAHEVQLFSS  
QYPFHVPLLSSQKMVYPGLQEPWLHSMYHGAAFQLTQGDQLSTHTDGIPHLVLPSTVFFGAFAL

TRTRPLEQKLISEEDLAANDILDYKDDDDKV

Tag:	C-Myc/DDK
Predicted MW:	18.6 kDa
Concentration:	>0.05 µg/µL as determined by microplate BCA method
Purity:	> 80% as determined by SDS-PAGE and Coomassie blue staining
Buffer:	25 mM Tris-HCl, 100 mM glycine, pH 7.3, 10% glycerol
Preparation:	Recombinant protein was captured through anti-DDK affinity column followed by conventional chromatography steps.
Note:	For testing in cell culture applications, please filter before use. Note that you may experience some loss of protein during the filtration process.
Storage:	Store at -80°C.
Stability:	Stable for 12 months from the date of receipt of the product under proper storage and handling conditions. Avoid repeated freeze-thaw cycles.
RefSeq:	<a href="#">NP_000586</a>
Locus ID:	4049
UniProt ID:	<a href="#">P01374</a> , <a href="#">Q5STV3</a>
RefSeq Size:	1423



[View online »](#)

**Cytogenetics:** 6p21.33

**RefSeq ORF:** 615

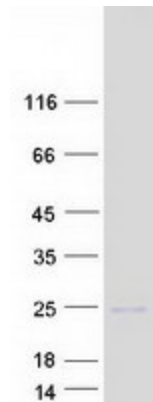
**Synonyms:** LT; TNFB; TNFSF1; TNLG1E

**Summary:** The encoded protein, a member of the tumor necrosis factor family, is a cytokine produced by lymphocytes. The protein is highly inducible, secreted, and forms heterotrimers with lymphotoxin-beta which anchor lymphotoxin-alpha to the cell surface. This protein also mediates a large variety of inflammatory, immunostimulatory, and antiviral responses, is involved in the formation of secondary lymphoid organs during development and plays a role in apoptosis. Genetic variations in this gene are associated with susceptibility to leprosy type 4, myocardial infarction, non-Hodgkin's lymphoma, and psoriatic arthritis. Alternatively spliced transcript variants have been observed for this gene. [provided by RefSeq, Jul 2012]

**Protein Families:** Druggable Genome, Secreted Protein, Transmembrane

**Protein Pathways:** Antigen processing and presentation, Cytokine-cytokine receptor interaction, Type I diabetes mellitus

### Product images:



Coomassie blue staining of purified LTA protein (Cat# [TP303741]). The protein was produced from HEK293T cells transfected with LTA cDNA clone (Cat# [RC203741]) using MegaTran 2.0 (Cat# [TT210002]).