

## Product datasheet for **TP303725M**

### RTDR1 (RSPH14) (NM\_014433) Human Recombinant Protein

#### Product data:

Product Type:	Recombinant Proteins
Description:	Recombinant protein of human rhabdoid tumor deletion region gene 1 (RTDR1), 100 µg
Species:	Human
Expression Host:	HEK293T
Expression cDNA Clone or AA Sequence:	>RC203725 protein sequence <b>Red</b> =Cloning site <b>Green</b> =Tags(s)

MAHSQNSLELPININATQITTAYGHRALPKLKEELQSEDLQTRQKALMALCDLMHDPECIYKAMNIGCME  
NLKALLKDSNSMVRITTEVLHITASHVGRYAFLEHDIVLALSFLLNDPSPVCRGNLYKAYMQLVQVPR  
GAQEIISKGLISSLVWKLQVEVEEEEFQEFILDTLVLCLEDATEALGSNWVLVKQKLLSANQNIRSKA  
ARALLNVSISREGKKQVCHFDVIPILVHLLKDPVEHVKSNAAGALMFATVITEGKYAALEAQAILLLEL  
LHSPMTIARLNATKALTMLAEAPEGRKALQTHVPTFRAMEVETYEKPQVAEALQRAARIAISVIEFKP

**TRTRPLEQKLISEEDLAANDILDYKDDDDKV**

Tag:	C-Myc/DDK
Predicted MW:	38.4 kDa
Concentration:	>0.05 µg/µL as determined by microplate BCA method
Purity:	> 80% as determined by SDS-PAGE and Coomassie blue staining
Buffer:	25 mM Tris-HCl, 100 mM glycine, pH 7.3, 10% glycerol
Preparation:	Recombinant protein was captured through anti-DDK affinity column followed by conventional chromatography steps.
Note:	For testing in cell culture applications, please filter before use. Note that you may experience some loss of protein during the filtration process.
Storage:	Store at -80°C.
Stability:	Stable for 12 months from the date of receipt of the product under proper storage and handling conditions. Avoid repeated freeze-thaw cycles.
RefSeq:	<u><a href="#">NP_055248</a></u>
Locus ID:	27156



[View online »](#)

UniProt ID: [Q9UHP6](#)

RefSeq Size: 1286

Cytogenetics: 22q11.22-q11.23

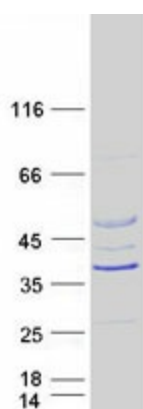
RefSeq ORF: 1044

Synonyms: RTDR1

**Summary:** This gene encodes a protein with no known function but with slight similarity to a yeast vacuolar protein. The gene is located in a region deleted in pediatric rhabdoid tumors of the brain, kidney and soft tissues, but mutations in this gene have not been associated with the disease. [provided by RefSeq, Jul 2008]

**Protein Families:** Druggable Genome

### Product images:



Coomassie blue staining of purified RSPH14 protein (Cat# [TP303725]). The protein was produced from HEK293T cells transfected with RSPH14 cDNA clone (Cat# [RC203725]) using MegaTran 2.0 (Cat# [TT210002]).