

Product datasheet for **TP303725L**

RTDR1 (RSPH14) (NM_014433) Human Recombinant Protein

Product data:

| | |
|---------------------------------------|--|
| Product Type: | Recombinant Proteins |
| Description: | Recombinant protein of human rhabdoid tumor deletion region gene 1 (RTDR1), 1 mg |
| Species: | Human |
| Expression Host: | HEK293T |
| Expression cDNA Clone or AA Sequence: | >RC203725 protein sequence Red =Cloning site Green =Tags(s) |

MAHSQNSLELPININATQITTAYGHRALPKLKEELQSEDLQTRQKALMALCDLMHDPECIYKAMNIGCME
NLKALLKDSNSMVRITTEVLHITASHVGRYAFLEHDIVLALSFLNNDPSPVCRGNLYKAYMQLVQVPR
GAQEIISKGLISSLVWKLQVEVEEEEFQEFILDTLVLCLEDATEALGSNVVLVKQKLLSANQNIRSKA
ARALLNVSISREGKKQVCHFDVIPILVHLLKDPVEHVKSNAAGALMFATVITEGKYAALEAQAIGLLEL
LHSPMTIARLNATKALTMLAEAPEGRKALQTHVPTFRAMEVETYKPKQVAEALQRAARIAISVIEFKP

TRTRPLEQKLISEEDLAANDILDYKDDDDKV

| | |
|----------------|--|
| Tag: | C-Myc/DDK |
| Predicted MW: | 38.4 kDa |
| Concentration: | >0.05 µg/µL as determined by microplate BCA method |
| Purity: | > 80% as determined by SDS-PAGE and Coomassie blue staining |
| Buffer: | 25 mM Tris-HCl, 100 mM glycine, pH 7.3, 10% glycerol |
| Preparation: | Recombinant protein was captured through anti-DDK affinity column followed by conventional chromatography steps. |
| Note: | For testing in cell culture applications, please filter before use. Note that you may experience some loss of protein during the filtration process. |
| Storage: | Store at -80°C. |
| Stability: | Stable for 12 months from the date of receipt of the product under proper storage and handling conditions. Avoid repeated freeze-thaw cycles. |
| RefSeq: | NP_055248 |
| Locus ID: | 27156 |



[View online »](#)

UniProt ID: [Q9UHP6](#)

RefSeq Size: 1286

Cytogenetics: 22q11.22-q11.23

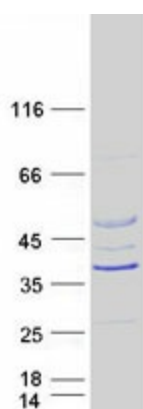
RefSeq ORF: 1044

Synonyms: RTDR1

Summary: This gene encodes a protein with no known function but with slight similarity to a yeast vacuolar protein. The gene is located in a region deleted in pediatric rhabdoid tumors of the brain, kidney and soft tissues, but mutations in this gene have not been associated with the disease. [provided by RefSeq, Jul 2008]

Protein Families: Druggable Genome

Product images:



Coomassie blue staining of purified RSPH14 protein (Cat# [TP303725]). The protein was produced from HEK293T cells transfected with RSPH14 cDNA clone (Cat# [RC203725]) using MegaTran 2.0 (Cat# [TT210002]).