

## Product datasheet for TP303725

### RTDR1 (RSPH14) (NM\_014433) Human Recombinant Protein

#### Product data:

**Product Type:** Recombinant Proteins

**Description:** Recombinant protein of human rhabdoid tumor deletion region gene 1 (RTDR1), 20 µg

**Species:** Human

**Expression Host:** HEK293T

**Expression cDNA Clone or AA Sequence:** >RC203725 protein sequence  
**Red**=Cloning site **Green**=Tags(s)

MAHSQNSLELPININATQITTAYGHRALPKLKEELQSEDLQTRQKALMALCDLMHDPECIYKAMNIGCME  
NLKALLKDSNSMVRITTEVLHITASHSVGRYAFLEHDIVLALSFLNDPSPVCRGNLYKAYMQLVQVPR  
GAQEIISKGLISSLVWKLQVEVEEEEFQEFILDTLVCLQEDATEALGSNVVLVKQLLSANQNIRSKA  
ARALLNVSISREGKKQVCHFDVIPILVHLLKDPVEHVKSNAAGALMFATVITEGKYAALEAQAIGLLEL  
LHSPMTIARLNATKALTMLAEAPEGRKALQTHVPTFRAMEVETYEKPQVAEALQRAARIAISVIEFKP

**TRTRPLEQKLISEEDLAANDILDYKDDDDKV**

**Tag:** C-Myc/DDK

**Predicted MW:** 38.4 kDa

**Concentration:** >0.05 µg/µL as determined by microplate BCA method

**Purity:** > 80% as determined by SDS-PAGE and Coomassie blue staining

**Buffer:** 25 mM Tris-HCl, 100 mM glycine, pH 7.3, 10% glycerol

**Preparation:** Recombinant protein was captured through anti-DDK affinity column followed by conventional chromatography steps.

**Note:** For testing in cell culture applications, please filter before use. Note that you may experience some loss of protein during the filtration process.

**Storage:** Store at -80°C.

**Stability:** Stable for 12 months from the date of receipt of the product under proper storage and handling conditions. Avoid repeated freeze-thaw cycles.

**RefSeq:** [NP\\_055248](#)

**Locus ID:** 27156



[View online »](#)

UniProt ID: [Q9UHP6](#)

RefSeq Size: 1286

Cytogenetics: 22q11.22-q11.23

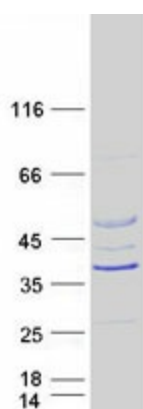
RefSeq ORF: 1044

Synonyms: RTDR1

**Summary:** This gene encodes a protein with no known function but with slight similarity to a yeast vacuolar protein. The gene is located in a region deleted in pediatric rhabdoid tumors of the brain, kidney and soft tissues, but mutations in this gene have not been associated with the disease. [provided by RefSeq, Jul 2008]

**Protein Families:** Druggable Genome

### Product images:



Coomassie blue staining of purified RSPH14 protein (Cat# TP303725). The protein was produced from HEK293T cells transfected with RSPH14 cDNA clone (Cat# [RC203725]) using MegaTran 2.0 (Cat# [TT210002]).