

## Product datasheet for **TP303722M**

### OTUD6B (NM\_016023) Human Recombinant Protein

#### Product data:

**Product Type:** Recombinant Proteins

**Description:** Recombinant protein of human OTU domain containing 6B (OTUD6B), 100 µg

**Species:** Human

**Expression Host:** HEK293T

**Expression cDNA Clone  
or AA Sequence:** >RC203722 protein sequence  
**Red**=Cloning site **Green**=Tags(s)

MEAVLTEELDEEEQLRRHRKEKKELQAKIQGMKNAVPKNDKKRRKQLTEDVAKLEKEMEQKHREELEQL  
KLTTKENKIDSVAVNISNLVLENQPPRISKAQKRREKKAALEREERIEAEIENLTGARHMESEKLAQ  
ILAAARQLEIKQIPSDGHCMYKAIEDQLKEKDCALTVVALRSQTAEYMQSHVEDFLPFLTNPNTGDMYTPE  
EFQKYCEDIVNTAAWGGQLELRALSHILQTPIEIIQADSPPIIVGEEYSKKPLILVYMRHAYGLGEHYNS  
VTRLVNIVTENC

**TRTRPLEQKLISEEDLAANDILDYKDDDDKV**

**Tag:** C-Myc/DDK

**Predicted MW:** 37.1 kDa

**Concentration:** >0.05 µg/µL as determined by microplate BCA method

**Purity:** > 80% as determined by SDS-PAGE and Coomassie blue staining

**Buffer:** 25 mM Tris-HCl, 100 mM glycine, pH 7.3, 10% glycerol

**Preparation:** Recombinant protein was captured through anti-DDK affinity column followed by conventional chromatography steps.

**Note:** For testing in cell culture applications, please filter before use. Note that you may experience some loss of protein during the filtration process.

**Storage:** Store at -80°C.

**Stability:** Stable for 12 months from the date of receipt of the product under proper storage and handling conditions. Avoid repeated freeze-thaw cycles.

**RefSeq:** [NP\\_057107](#)

**Locus ID:** 51633



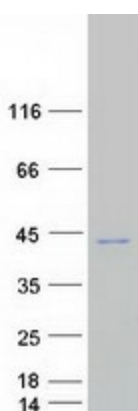
[View online »](#)

UniProt ID: [Q8N6M0](#), [A0A087X0W9](#)  
RefSeq Size: 3306  
Cytogenetics: 8q21.3  
RefSeq ORF: 879  
Synonyms: CGI-77; DUBA-5; DUBA5; IDDFSDA

**Summary:** This gene encodes a member of the ovarian tumor domain (OTU)-containing subfamily of deubiquitinating enzymes. Deubiquitinating enzymes are primarily involved in removing ubiquitin from proteins targeted for degradation. This protein may function as a negative regulator of the cell cycle in B cells. [provided by RefSeq, Nov 2013]

**Protein Families:** Protease

### Product images:



Coomassie blue staining of purified OTUD6B protein (Cat# [TP303722]). The protein was produced from HEK293T cells transfected with OTUD6B cDNA clone (Cat# [RC203722]) using MegaTran 2.0 (Cat# [TT210002]).