

Product datasheet for **TP303704M**

NPEPL1 (NM_024663) Human Recombinant Protein

Product data:

Product Type: Recombinant Proteins

Description: Recombinant protein of human aminopeptidase-like 1 (NPEPL1), 100 µg

Species: Human

Expression Host: HEK293T

Expression cDNA Clone or AA Sequence: >RC203704 protein sequence
Red=Cloning site **Green**=Tags(s)

MANVGLQFQASAGSDPQSRPLLLGQLHHLHRVPWSHV RGKLQPRVTEELWQAALSTLNPNTDSCPLY
LNYATVAALPCRVS RHNSPSAAHFITRLVRTCLPPGAHRCIVMVCEQPEVFASACALARAFPLFTHRSGA
SRRLEKKTVTVEFFLVGQDNGPVEVSTLQCLANATDGVRLAARIVDTPCNEMNTDTFLEEINKVGKELGI
IPTIIRDEELKTRGFGGIYGVGKAALHPPALAVLSHTPDGATQTIAWVGKGIYDYGGLSIKGGKTTMPGM
KRDCGGA AAVLGA FRAAIKQGFKDNLHAVFCLAENSVGNATRPDDIHLLYSGKTVEINNTDAEGRVLVA
DGVSYACKDLGADIILDMATLTGAQGIATGKYHAAVLTNSAEWEAACVKAGRKCGDLVHPLVYCP ELHFS
EFTSAVADMKNSVADRDNSSPSSCAGLFIASHIGFDWPGVWVHLDIAAPVHAGERATGFGVALLLALFGR
SEDPLLNLVSP LGCEVDVEEGDLGRDSKRRRLV

TRTRPLEQKLISEEDLAANDILDYKDDDDKV

Tag: C-Myc/DDK

Predicted MW: 55.7 kDa

Concentration: >0.05 µg/µL as determined by microplate BCA method

Purity: > 80% as determined by SDS-PAGE and Coomassie blue staining

Buffer: 25 mM Tris-HCl, 100 mM glycine, pH 7.3, 10% glycerol

Preparation: Recombinant protein was captured through anti-DDK affinity column followed by conventional chromatography steps.

Note: For testing in cell culture applications, please filter before use. Note that you may experience some loss of protein during the filtration process.

Storage: Store at -80°C.

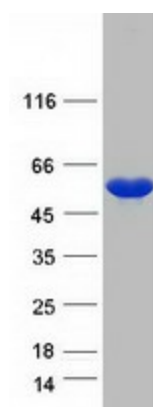
Stability: Stable for 12 months from the date of receipt of the product under proper storage and handling conditions. Avoid repeated freeze-thaw cycles.



[View online »](#)

RefSeq:	NP_078939
Locus ID:	79716
UniProt ID:	Q8NDH3
RefSeq Size:	2217
Cytogenetics:	20q13.32
RefSeq ORF:	1569
Synonyms:	bA261P9.2
Summary:	Probably catalyzes the removal of unsubstituted N-terminal amino acids from various peptides. [UniProtKB/Swiss-Prot Function]
Protein Families:	Druggable Genome, Protease

Product images:



Coomassie blue staining of purified NPEPL1 protein (Cat# [TP303704]). The protein was produced from HEK293T cells transfected with NPEPL1 cDNA clone (Cat# [RC203704]) using MegaTran 2.0 (Cat# [TT210002]).