

Product datasheet for **TP303704L**

NPEPL1 (NM_024663) Human Recombinant Protein

Product data:

Product Type:	Recombinant Proteins
Description:	Recombinant protein of human aminopeptidase-like 1 (NPEPL1), 1 mg
Species:	Human
Expression Host:	HEK293T
Expression cDNA Clone or AA Sequence:	>RC203704 protein sequence Red =Cloning site Green =Tags(s)

MANVGLQFQASAGSDSPQSRPLLLGQLHHLHRVPWSHVIRGKLRVTEELWQAALSTLNPNTDSCPLY
LNYATVAALPCRVSRRHNSPSAAHFITRLVRTCLPPGAHRCIVMVCEQPEVFASACALARAFPLFTHRSGA
SRRLEKKTVTVEFFLVGQDNGPVEVSTLQCLANATDGVRLAARIVDTPCNEMNTDTFLEEINKVGKELGI
IPTIIRDEELKTRGFGGIYGVGKAALHPPALAVLSHTPDGATQTIAWVGKGIYDYGGLSIKGGKTTMPGM
KRDCGGAAVLGAFRAAIKQGFKNLHAVFCLAENSVGNATRPDDIHLLYSGKTVEINNTDAEGRVLA
DGVSYACKDLGADIILDMATLTGAQGIATGKYHAAVLTNSAEWEAACVKAGRKCGDLVHPLVYCPPELHFS
EFTSAVADMKNSVADRDNSPSSCAGLFIASHIGFDWPGVWVHLDIAAPVHAGERATGFGVALLLALFGR
SEDPLLNLVSPGCEVDVEEGDLGRDSKRRRLV

TRTRPLEQKLISEEDLAANDILDYKDDDDKV

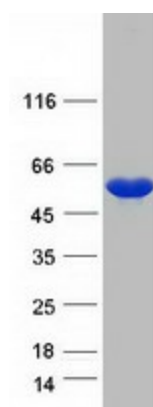
Tag:	C-Myc/DDK
Predicted MW:	55.7 kDa
Concentration:	>0.05 µg/µL as determined by microplate BCA method
Purity:	> 80% as determined by SDS-PAGE and Coomassie blue staining
Buffer:	25 mM Tris-HCl, 100 mM glycine, pH 7.3, 10% glycerol
Preparation:	Recombinant protein was captured through anti-DDK affinity column followed by conventional chromatography steps.
Note:	For testing in cell culture applications, please filter before use. Note that you may experience some loss of protein during the filtration process.
Storage:	Store at -80°C.
Stability:	Stable for 12 months from the date of receipt of the product under proper storage and handling conditions. Avoid repeated freeze-thaw cycles.



[View online »](#)

RefSeq:	NP_078939
Locus ID:	79716
UniProt ID:	Q8NDH3
RefSeq Size:	2217
Cytogenetics:	20q13.32
RefSeq ORF:	1569
Synonyms:	bA261P9.2
Summary:	Probably catalyzes the removal of unsubstituted N-terminal amino acids from various peptides. [UniProtKB/Swiss-Prot Function]
Protein Families:	Druggable Genome, Protease

Product images:



Coomassie blue staining of purified NPEPL1 protein (Cat# [TP303704]). The protein was produced from HEK293T cells transfected with NPEPL1 cDNA clone (Cat# [RC203704]) using MegaTran 2.0 (Cat# [TT210002]).